



ELECTRONIC COPY

LG794696794
Report verification at igi.org



April 27, 2026

IGI Report Number **LG794696794**

Description **LABORATORY GROWN DIAMOND**

Shape and Cutting Style **ROUND ROSE CUT**

Measurements **7.82 - 7.89 X 2.40 MM**

GRADING RESULTS

Carat Weight **1.28 CARAT**

Color Grade **F**

Clarity Grade **VS 1**

April 27, 2026

IGI Report Number **LG794696794**

Description **LABORATORY GROWN DIAMOND**

Shape and Cutting Style **ROUND ROSE CUT**

Measurements **7.82 - 7.89 X 2.40 MM**

GRADING RESULTS

Carat Weight **1.28 CARAT**

Color Grade **F**

Clarity Grade **VS 1**

ADDITIONAL GRADING INFORMATION

Polish **VERY GOOD**

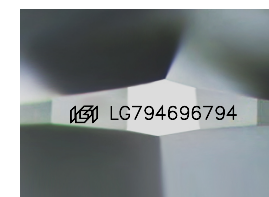
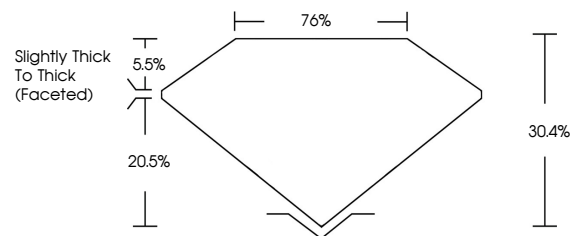
Symmetry **VERY GOOD**

Fluorescence **NONE**

Inscription(s) **IGI LG794696794**

Comments: This Laboratory Grown Diamond was created by Chemical Vapor Deposition (CVD) growth process.
Type IIa

PROPORTIONS



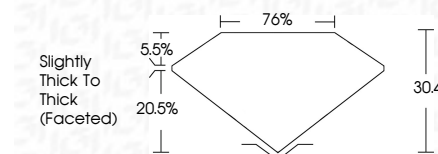
Sample Image Used

COLOR

D E F G H I J Faint Very Light Light

CLARITY

FL	IF	VS ¹⁻²	VS ¹⁻²	SI ¹⁻²	I ¹⁻³
Flawless	Internally Flawless	Very Very Slightly Included	Very Slightly Included	Slightly Included	Included



ADDITIONAL GRADING INFORMATION

Polish **VERY GOOD**

Symmetry **VERY GOOD**

Fluorescence **NONE**

Inscription(s) **IGI LG794696794**

Comments: This Laboratory Grown Diamond was created by Chemical Vapor Deposition (CVD) growth process.
Type IIa



IGI



April 27, 2026
IGI Report No LG794696794
ROUND ROSE CUT
7.82 - 7.89 X 2.40 MM
Carat Weight **1.28 CARAT**
Color Grade **F**
Clarity Grade **VS 1**
Table **80.4%**
Girdle **70%**
Slightly Thick To Thick (Faceted)
Culet **VERY GOOD**
Polish **VERY GOOD**
Symmetry **VERY GOOD**
Fluorescence **NONE**
Inscription(s) **IGI LG794696794**
Comments: This Laboratory Grown Diamond was created by Chemical Vapor Deposition (CVD) growth process.
Type IIa