



ELECTRONIC COPY

LG794695360
Report verification at igi.org



May 11, 2026

IGI Report Number **LG794695360**

Description **LABORATORY GROWN DIAMOND**

Shape and Cutting Style **ROUND BRILLIANT**

Measurements **11.03 - 11.10 X 6.60 MM**

GRADING RESULTS

Carat Weight **5.02 CARATS**

Color Grade **E**

Clarity Grade **VVS 2**

Cut Grade **IDEAL**

May 11, 2026

IGI Report Number **LG794695360**

Description **LABORATORY GROWN DIAMOND**

Shape and Cutting Style **ROUND BRILLIANT**

Measurements **11.03 - 11.10 X 6.60 MM**

GRADING RESULTS

Carat Weight **5.02 CARATS**

Color Grade **E**

Clarity Grade **VVS 2**

Cut Grade **IDEAL**

ADDITIONAL GRADING INFORMATION

Polish **EXCELLENT**

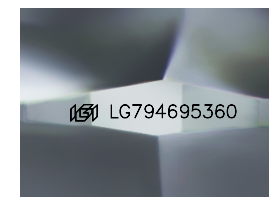
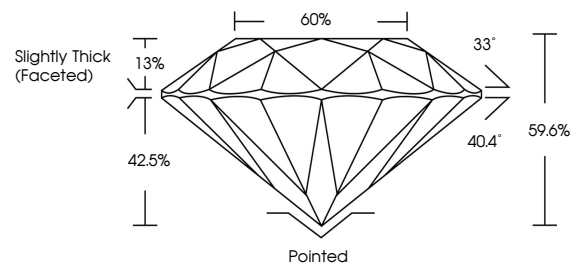
Symmetry **EXCELLENT**

Fluorescence **NONE**

Inscription(s) **IGI LG794695360**

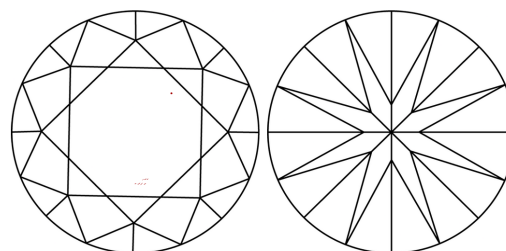
Comments: This Laboratory Grown Diamond was created by Chemical Vapor Deposition (CVD) growth process. Type IIa

PROPORTIONS



Sample Image Used

CLARITY CHARACTERISTICS



KEY TO SYMBOLS

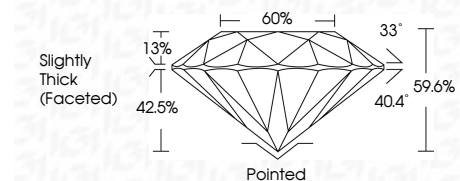
Red symbols indicate internal characteristics.
Green symbols indicate external characteristics.

COLOR

D E F G H I J Faint Very Light Light

CLARITY

| FL | IF | VVS ¹⁻² | VS ¹⁻² | SI ¹⁻² | I ¹⁻³ |
|----------|---------------------|-----------------------------|------------------------|-------------------|------------------|
| Flawless | Internally Flawless | Very Very Slightly Included | Very Slightly Included | Slightly Included | Included |



ADDITIONAL GRADING INFORMATION

Polish **EXCELLENT**

Symmetry **EXCELLENT**

Fluorescence **NONE**

Inscription(s) **IGI LG794695360**

Comments: This Laboratory Grown Diamond was created by Chemical Vapor Deposition (CVD) growth process. Type IIa



IGI



May 11, 2026
IGI Report No LG794695360
ROUND BRILLIANT

5.02 CARATS
E

11.03 - 11.10 X 6.60 MM

Carat Weight
Color Grade
Clarity Grade
Depth
Table
Girdle
Culet
Polish
Symmetry
Fluorescence
Inscriptions(s)

5.02 CARATS
E
VVS 2
IDEAL
59.6%
60%
Slightly Thick (Faceted)

Pointed
EXCELLENT
EXCELLENT
NONE
IGI LG794695360

Comments: This Laboratory Grown Diamond was created by Chemical Vapor Deposition (CVD) growth process. Type IIa