



May 9, 2026

IGI Report Number **LG794694802**

**MARQUISE BRILLIANT**

**LABORATORY GROWN DIAMOND**

**10.12 X 5.05 X 3.18 MM**

Carat Weight **0.92 CARAT**

Color Grade **D**

Clarity Grade **FLAWLESS**

Polish **EXCELLENT**

Symmetry **EXCELLENT**

Fluorescence **NONE**

Inscription(s) **IGI LG794694802**

Comments: As Grown - No indication of post-growth treatment. This Laboratory Grown Diamond was created by High Pressure High Temperature (HPHT) growth process. Type II

**LABORATORY GROWN DIAMOND REPORT**

May 9, 2026

IGI Report Number

**LG794694802**

Description

**LABORATORY GROWN DIAMOND**

Shape and Cutting Style

**MARQUISE BRILLIANT**

Measurements

**10.12 X 5.05 X 3.18 MM**

**GRADING RESULTS**

Carat Weight

**0.92 CARAT**

Color Grade

**D**

Clarity Grade

**FLAWLESS**

**ADDITIONAL GRADING INFORMATION**

Polish

**EXCELLENT**

Symmetry

**EXCELLENT**

Fluorescence

**NONE**

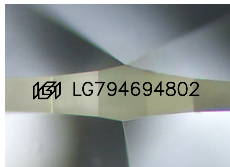
Inscription(s)

**IGI LG794694802**

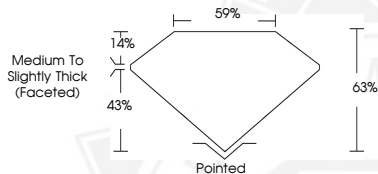
Comments: As Grown - No indication of post-growth treatment.

This Laboratory Grown Diamond was created by High Pressure High Temperature (HPHT) growth process.

Type II



Sample Image Used



May 9, 2026

IGI Report Number **LG794694802**

**MARQUISE BRILLIANT**

**LABORATORY GROWN DIAMOND**

**10.12 X 5.05 X 3.18 MM**

Carat Weight **0.92 CARAT**

Color Grade **D**

Clarity Grade **FLAWLESS**

Polish **EXCELLENT**

Symmetry **EXCELLENT**

Fluorescence **NONE**

Inscription(s) **IGI LG794694802**

Comments: As Grown - No indication of post-growth treatment. This Laboratory Grown Diamond was created by High Pressure High Temperature (HPHT) growth process. Type II



THIS DOCUMENT WAS PRODUCED WITH THE FOLLOWING SECURITY MEASURES: SPECIAL DOCUMENT PAPER, INK SCREENS, WATERMARK, BACKGROUND DESIGNS, HOLOGRAM AND OTHER SECURITY FEATURES NOT LISTED AND DO EXCEED DOCUMENT SECURITY INDUSTRY GUIDELINES.