



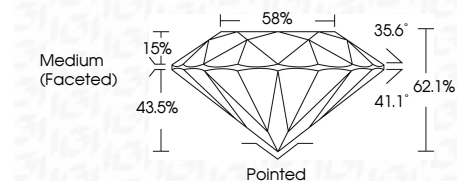
ELECTRONIC COPY

LG794694451
Report verification at igi.org



May 7, 2026
IGI Report Number LG794694451
Description LABORATORY GROWN DIAMOND
Shape and Cutting Style ROUND BRILLIANT
Measurements 8.14 - 8.19 X 5.07 MM

GRADING RESULTS
Carat Weight 2.08 CARATS
Color Grade E
Clarity Grade VVS 1
Cut Grade IDEAL

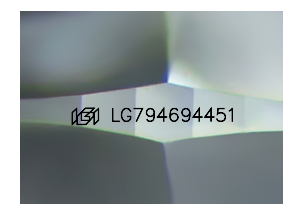
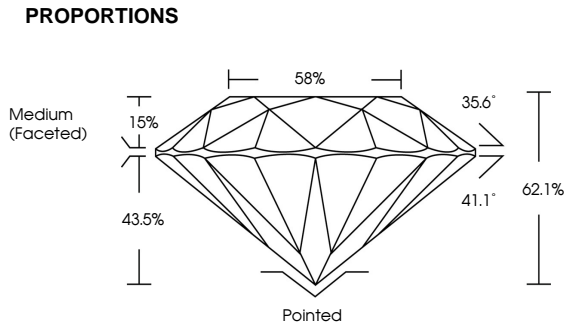


ADDITIONAL GRADING INFORMATION
Polish EXCELLENT
Symmetry EXCELLENT
Fluorescence NONE
Inscription(s) LG794694451
Comments: As Grown - No indication of post-growth treatment.
This Laboratory Grown Diamond was created by High Pressure High Temperature (HPHT) growth process.
Type II



May 7, 2026
IGI Report No LG794694451
ROUND BRILLIANT
8.14 - 8.19 X 5.07 MM
2.08 CARATS
E
VVS 1
IDEAL
62.1%
88%
Medium (Faceted)
Pointed
EXCELLENT
EXCELLENT
NONE
IGI LG794694451
Comments: As Grown - No indication of post-growth treatment.
This Laboratory Grown Diamond was created by High Pressure High Temperature (HPHT) growth process.
Type II

May 7, 2026
IGI Report Number LG794694451
Description LABORATORY GROWN DIAMOND
Shape and Cutting Style ROUND BRILLIANT
Measurements 8.14 - 8.19 X 5.07 MM
GRADING RESULTS
Carat Weight 2.08 CARATS
Color Grade E
Clarity Grade VVS 1
Cut Grade IDEAL



Sample Image Used

Table with columns D, E, F, G, H, I, J, Faint, Very Light, Light

Table with columns FL, IF, VS 1-2, VS 1-2, SI 1-2, I 1-3

