



**ELECTRONIC COPY**

LG794693588  
Report verification at igi.org



May 5, 2026

IGI Report Number **LG794693588**

Description **LABORATORY GROWN DIAMOND**

Shape and Cutting Style **ROUND BRILLIANT**

Measurements **9.23 - 9.28 X 5.61 MM**

**GRADING RESULTS**

Carat Weight **3.01 CARATS**

Color Grade **FANCY VIVID BLUE**

Clarity Grade **VS 1**

Cut Grade **IDEAL**

May 5, 2026

IGI Report Number **LG794693588**

Description **LABORATORY GROWN DIAMOND**

Shape and Cutting Style **ROUND BRILLIANT**

Measurements **9.23 - 9.28 X 5.61 MM**

**GRADING RESULTS**

Carat Weight **3.01 CARATS**

Color Grade **FANCY VIVID BLUE**

Clarity Grade **VS 1**

Cut Grade **IDEAL**

**ADDITIONAL GRADING INFORMATION**

Polish **EXCELLENT**

Symmetry **EXCELLENT**

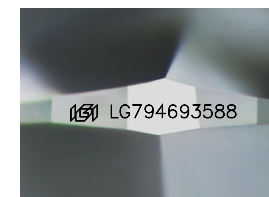
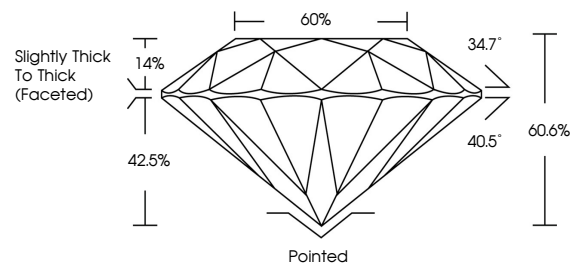
Fluorescence **NONE**

Inscription(s) **LG794693588**

Comments: This Laboratory Grown Diamond was created by Chemical Vapor Deposition (CVD) growth process.

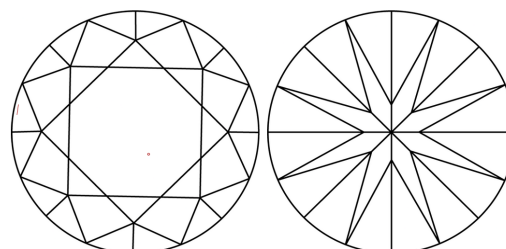
Indications of post-growth treatment.

**PROPORTIONS**



Sample Image Used

**CLARITY CHARACTERISTICS**



**KEY TO SYMBOLS**

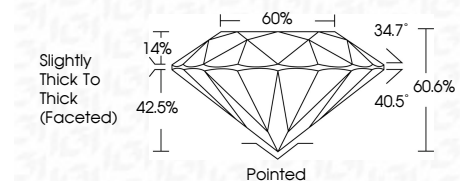
Red symbols indicate internal characteristics.  
Green symbols indicate external characteristics.

**COLOR**

D E F G H I J Faint Very Light Light

**CLARITY**

FL	IF	VS <sup>1-2</sup>	VS <sup>1-2</sup>	SI <sup>1-2</sup>	I <sup>1-3</sup>
Flawless	Internally Flawless	Very Very Slightly Included	Very Slightly Included	Slightly Included	Included



**ADDITIONAL GRADING INFORMATION**

Polish **EXCELLENT**

Symmetry **EXCELLENT**

Fluorescence **NONE**

Inscription(s) **LG794693588**

Comments: This Laboratory Grown Diamond was created by Chemical Vapor Deposition (CVD) growth process. Indications of post-growth treatment.



May 5, 2026	IGI Report No LG794693588	3.01 CARATS	FANCY VIVID BLUE	VS 1	IDEAL	60%	Slightly Thick To Thick (Faceted)	Pointed	EXCELLENT	EXCELLENT	NONE	LG794693588
ROUND BRILLIANT	9.23 - 9.28 X 5.61 MM	Carat Weight	Color Grade	Clarity Grade	Cut Grade	Depth	Table	Girdle	Polish	Symmetry	Fluorescence	Inscription(s)

Comments: This Laboratory Grown Diamond was created by Chemical Vapor Deposition (CVD) growth process. Indications of post-growth treatment.