



ELECTRONIC COPY

LG794693437
Report verification at igi.org



May 4, 2026

IGI Report Number LG794693437

Description LABORATORY GROWN DIAMOND

Shape and Cutting Style ROUND BRILLIANT

Measurements 8.12 - 8.18 X 4.91 MM

GRADING RESULTS

Carat Weight 2.02 CARATS

Color Grade FANCY VIVID BLUE

Clarity Grade VVS 2

Cut Grade IDEAL

May 4, 2026

IGI Report Number LG794693437

Description LABORATORY GROWN DIAMOND

Shape and Cutting Style ROUND BRILLIANT

Measurements 8.12 - 8.18 X 4.91 MM

GRADING RESULTS

Carat Weight 2.02 CARATS

Color Grade FANCY VIVID BLUE

Clarity Grade VVS 2

Cut Grade IDEAL

ADDITIONAL GRADING INFORMATION

Polish EXCELLENT

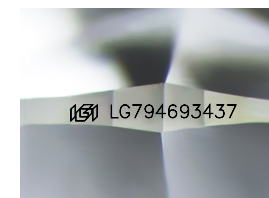
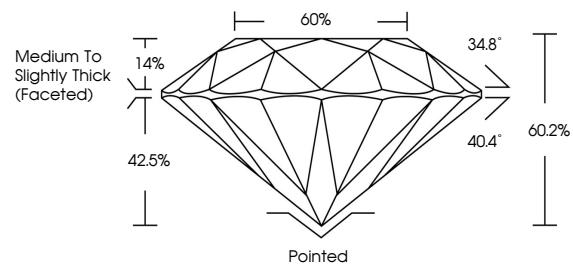
Symmetry EXCELLENT

Fluorescence NONE

Inscription(s) IGI LG794693437

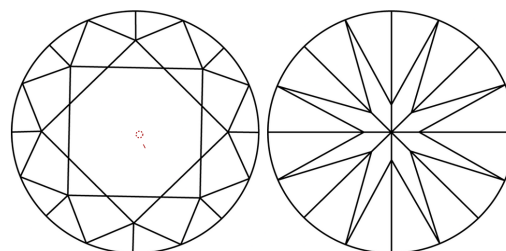
Comments: This Laboratory Grown Diamond was created by High Pressure High Temperature (HPHT) growth process. Indications of post-growth treatment.

PROPORTIONS



Sample Image Used

CLARITY CHARACTERISTICS



KEY TO SYMBOLS

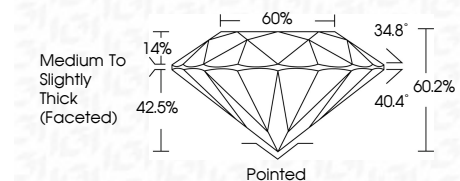
Red symbols indicate internal characteristics. Green symbols indicate external characteristics.

COLOR

D E F G H I J Faint Very Light Light

CLARITY

FL IF VVS 1-2 VS 1-2 SI 1-2 I 1-3
Flawless Internally Flawless Very Very Slightly Included Very Slightly Included Slightly Included Included



ADDITIONAL GRADING INFORMATION

Polish EXCELLENT

Symmetry EXCELLENT

Fluorescence NONE

Inscription(s) IGI LG794693437

Comments: This Laboratory Grown Diamond was created by High Pressure High Temperature (HPHT) growth process. Indications of post-growth treatment.



Table with 2 columns: Property and Value. Includes: May 4, 2026, IGI Report No LG794693437, ROUND BRILLIANT, 8.12 - 8.18 X 4.91 MM, 2.02 CARATS, FANCY VIVID BLUE, VVS 2, IDEAL, 60.2%, 60%, Medium To Slightly Thick (Faceted), Pointed, EXCELLENT, EXCELLENT, NONE, IGI LG794693437, Comments: This Laboratory Grown Diamond was created by High Pressure High Temperature (HPHT) growth process. Indications of post-growth treatment.