



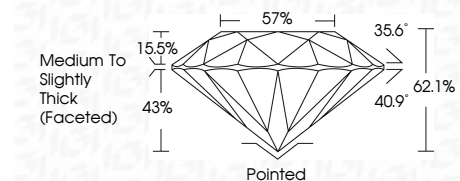
ELECTRONIC COPY

LG794693201 Report verification at igi.org



May 2, 2026 IGI Report Number LG794693201 Description LABORATORY GROWN DIAMOND Shape and Cutting Style ROUND BRILLIANT Measurements 9.72 - 9.75 X 6.05 MM

GRADING RESULTS Carat Weight 3.54 CARATS Color Grade F Clarity Grade VVS 2 Cut Grade IDEAL



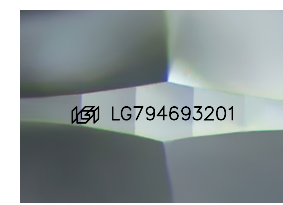
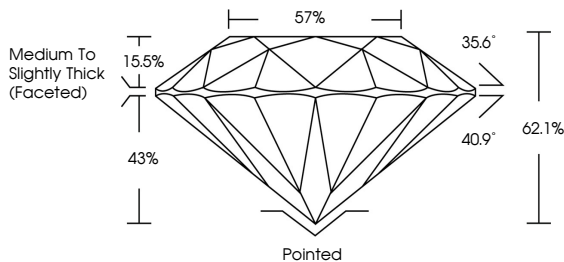
ADDITIONAL GRADING INFORMATION Polish EXCELLENT Symmetry EXCELLENT Fluorescence NONE Inscription(s) IGI LG794693201 Comments: This Laboratory Grown Diamond was created by Chemical Vapor Deposition (CVD) growth process. Type IIa



May 2, 2026 IGI Report No LG794693201 ROUND BRILLIANT 9.72 - 9.75 X 6.05 MM 3.54 CARATS F VVS 2 IDEAL 62.1% 57% Medium To Slightly Thick (Faceted) Pointed EXCELLENT EXCELLENT NONE IGI LG794693201

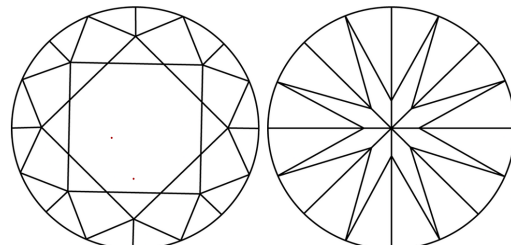
May 2, 2026 IGI Report Number LG794693201 Description LABORATORY GROWN DIAMOND Shape and Cutting Style ROUND BRILLIANT Measurements 9.72 - 9.75 X 6.05 MM GRADING RESULTS Carat Weight 3.54 CARATS Color Grade F Clarity Grade VVS 2 Cut Grade IDEAL ADDITIONAL GRADING INFORMATION Polish EXCELLENT Symmetry EXCELLENT Fluorescence NONE Inscription(s) IGI LG794693201

PROPORTIONS



Sample Image Used

CLARITY CHARACTERISTICS



KEY TO SYMBOLS Red symbols indicate internal characteristics. Green symbols indicate external characteristics.

COLOR

Color scale table with categories D, E, F, G, H, I, J, Faint, Very Light, Light

CLARITY

Clarity scale table with categories FL, IF, VS 1-2, VS 1-2, SI 1-2, I 1-3, Flawless, Internally Flawless, Very Very Slightly Included, Very Slightly Included, Slightly Included, Included

