



ELECTRONIC COPY

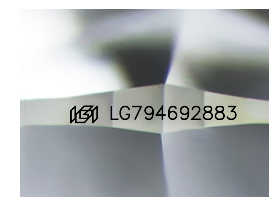
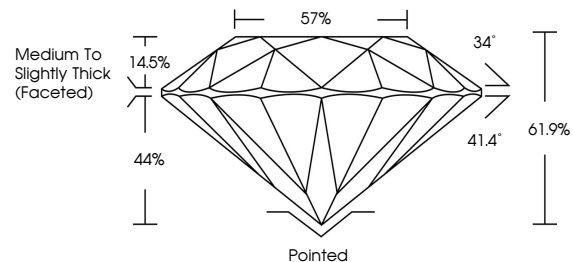
LG794692883 Report verification at igi.org



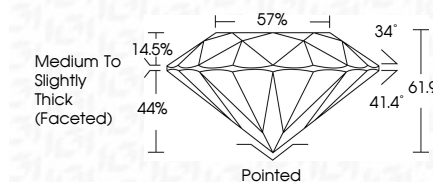
April 29, 2026 IGI Report Number LG794692883 Description LABORATORY GROWN DIAMOND Shape and Cutting Style ROUND BRILLIANT Measurements 8.11 - 8.17 X 5.04 MM GRADING RESULTS Carat Weight 2.04 CARATS Color Grade D Clarity Grade VVS 2 Cut Grade IDEAL

April 29, 2026 IGI Report Number LG794692883 Description LABORATORY GROWN DIAMOND Shape and Cutting Style ROUND BRILLIANT Measurements 8.11 - 8.17 X 5.04 MM GRADING RESULTS Carat Weight 2.04 CARATS Color Grade D Clarity Grade VVS 2 Cut Grade IDEAL

PROPORTIONS



Sample Image Used



ADDITIONAL GRADING INFORMATION

Polish EXCELLENT Symmetry EXCELLENT Fluorescence NONE Inscription(s) LG794692883

Comments: As Grown - No indication of post-growth treatment. This Laboratory Grown Diamond was created by High Pressure High Temperature (HPHT) growth process. Type II

COLOR

D E F G H I J Faint Very Light Light

CLARITY

FL IF VVS 1-2 VS 1-2 SI 1-2 I 1-3 Flawless Internally Flawless Very Very Slightly Included Very Slightly Included Slightly Included Included

ADDITIONAL GRADING INFORMATION

Polish EXCELLENT Symmetry EXCELLENT Fluorescence NONE Inscription(s) LG794692883 Comments: As Grown - No indication of post-growth treatment. This Laboratory Grown Diamond was created by High Pressure High Temperature (HPHT) growth process. Type II



IGI



April 29, 2026 IGI Report No LG794692883 ROUND BRILLIANT 2.04 CARATS D 8.11 - 8.17 X 5.04 MM Carat Weight Color Grade VVS 2 IDEAL 61.9% 57% Medium To Slightly Thick (Faceted) Pointed EXCELLENT EXCELLENT NONE NONE LG794692883 Comments: As Grown - No indication of post-growth treatment. This Laboratory Grown Diamond was created by High Pressure High Temperature (HPHT) growth process. Type II