



**ELECTRONIC COPY**

LG794691965  
Report verification at igi.org



April 27, 2026  
IGI Report Number **LG794691965**  
Description **LABORATORY GROWN DIAMOND**  
Shape and Cutting Style **ROUND BRILLIANT**  
Measurements **7.33 - 7.38 X 4.54 MM**  
**GRADING RESULTS**  
Carat Weight **1.52 CARAT**  
Color Grade **FANCY VIVID BLUE**  
Clarity Grade **VS 1**  
Cut Grade **IDEAL**

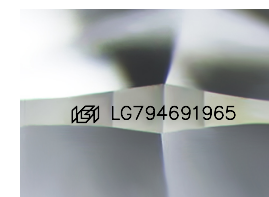
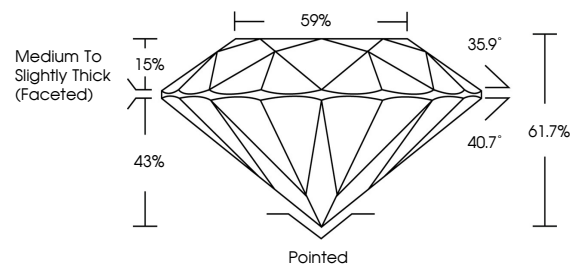
April 27, 2026  
IGI Report Number **LG794691965**  
Description **LABORATORY GROWN DIAMOND**  
Shape and Cutting Style **ROUND BRILLIANT**  
Measurements **7.33 - 7.38 X 4.54 MM**  
**GRADING RESULTS**  
Carat Weight **1.52 CARAT**  
Color Grade **FANCY VIVID BLUE**  
Clarity Grade **VS 1**  
Cut Grade **IDEAL**

**ADDITIONAL GRADING INFORMATION**

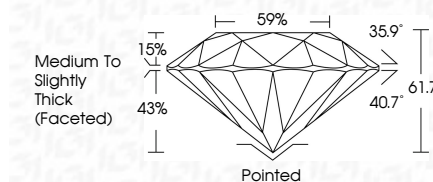
Polish **EXCELLENT**  
Symmetry **EXCELLENT**  
Fluorescence **NONE**  
Inscription(s) **LG794691965**

Comments: This Laboratory Grown Diamond was created by Chemical Vapor Deposition (CVD) growth process.  
Indications of post-growth treatment.

**PROPORTIONS**



Sample Image Used



**COLOR**

D E F G H I J Faint Very Light Light

**CLARITY**

FL	IF	VS <sup>1-2</sup>	VS <sup>1-2</sup>	SI <sup>1-2</sup>	I <sup>1-3</sup>
Flawless	Internally Flawless	Very Very Slightly Included	Very Slightly Included	Slightly Included	Included

**ADDITIONAL GRADING INFORMATION**

Polish **EXCELLENT**  
Symmetry **EXCELLENT**  
Fluorescence **NONE**  
Inscription(s) **LG794691965**  
Comments: This Laboratory Grown Diamond was created by Chemical Vapor Deposition (CVD) growth process.  
Indications of post-growth treatment.



**IGI**



April 27, 2026  
IGI Report No **LG794691965**  
**ROUND BRILLIANT**  
7.33 - 7.38 X 4.54 MM  
1.52 CARAT  
FANCY VIVID BLUE  
VS 1  
IDEAL  
61.7%  
59%  
Medium To Slightly Thick (Faceted)  
Pointed  
EXCELLENT  
EXCELLENT  
NONE  
IGI LG794691965  
Comments: This Laboratory Grown Diamond was created by Chemical Vapor Deposition (CVD) growth process.  
Indications of post-growth treatment.