



**ELECTRONIC COPY**

LG794690029  
Report verification at igi.org



April 27, 2026

IGI Report Number **LG794690029**

Description **LABORATORY GROWN DIAMOND**

Shape and Cutting Style **PRINCESS CUT**

Measurements **10.48 X 10.45 X 7.45 MM**

**GRADING RESULTS**

Carat Weight **7.07 CARATS**

Color Grade **F**

Clarity Grade **VVS 2**

April 27, 2026  
IGI Report Number **LG794690029**  
Description **LABORATORY GROWN DIAMOND**  
Shape and Cutting Style **PRINCESS CUT**  
Measurements **10.48 X 10.45 X 7.45 MM**

**GRADING RESULTS**

Carat Weight **7.07 CARATS**

Color Grade **F**

Clarity Grade **VVS 2**

**ADDITIONAL GRADING INFORMATION**

Polish **EXCELLENT**

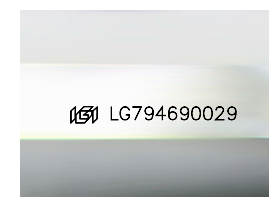
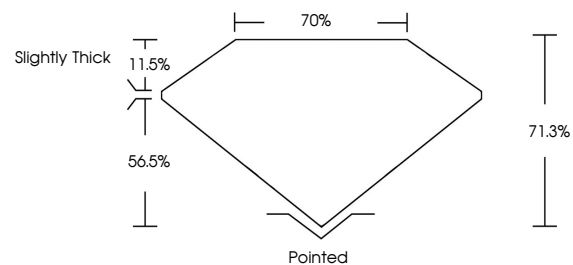
Symmetry **EXCELLENT**

Fluorescence **NONE**

Inscription(s) **IGI LG794690029**

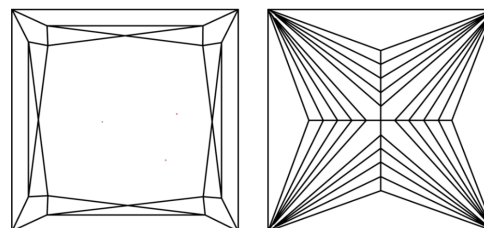
Comments: This Laboratory Grown Diamond was created by Chemical Vapor Deposition (CVD) growth process. Type IIa

**PROPORTIONS**



Sample Image Used

**CLARITY CHARACTERISTICS**



**KEY TO SYMBOLS**

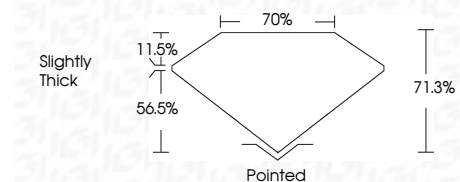
Red symbols indicate internal characteristics.  
Green symbols indicate external characteristics.

**COLOR**

D E F G H I J Faint Very Light Light

**CLARITY**

FL	IF	VVS <sup>1-2</sup>	VS <sup>1-2</sup>	SI <sup>1-2</sup>	I <sup>1-3</sup>
Flawless	Internally Flawless	Very Very Slightly Included	Very Slightly Included	Slightly Included	Included



**ADDITIONAL GRADING INFORMATION**

Polish **EXCELLENT**

Symmetry **EXCELLENT**

Fluorescence **NONE**

Inscription(s) **IGI LG794690029**

Comments: This Laboratory Grown Diamond was created by Chemical Vapor Deposition (CVD) growth process. Type IIa



**IGI**



April 27, 2026  
IGI Report No. **LG794690029**  
**PRINCESS CUT**

**10.48 X 10.45 X 7.45 MM**

**7.07 CARATS**  
F

**VVS 2**  
71.0%  
70%

**Slightly Thick**

**Pointed**  
EXCELLENT  
EXCELLENT  
NONE  
IGI LG794690029

Comments: This Laboratory Grown Diamond was created by Chemical Vapor Deposition (CVD) growth process. Type IIa