



ELECTRONIC COPY

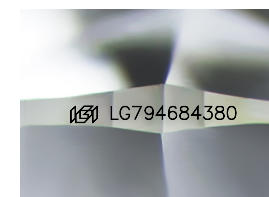
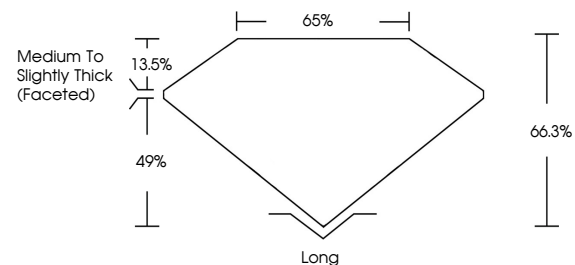
LG794684380
Report verification at igi.org



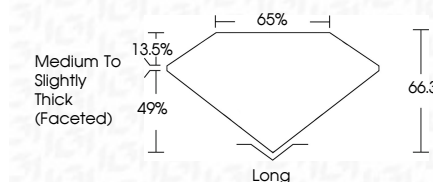
April 22, 2026
IGI Report Number **LG794684380**
Description **LABORATORY GROWN DIAMOND**
Shape and Cutting Style **RECTANGULAR CUSHION MIXED CUT**
Measurements **12.41 X 8.82 X 5.85 MM**
GRADING RESULTS
Carat Weight **6.20 CARATS**
Color Grade **E**
Clarity Grade **VVS 1**

April 22, 2026
IGI Report Number **LG794684380**
Description **LABORATORY GROWN DIAMOND**
Shape and Cutting Style **RECTANGULAR CUSHION MIXED CUT**
Measurements **12.41 X 8.82 X 5.85 MM**
GRADING RESULTS
Carat Weight **6.20 CARATS**
Color Grade **E**
Clarity Grade **VVS 1**

PROPORTIONS



Sample Image Used



ADDITIONAL GRADING INFORMATION

Polish **EXCELLENT**
Symmetry **EXCELLENT**
Fluorescence **NONE**
Inscription(s) **IGI LG794684380**

Comments: This Laboratory Grown Diamond was created by Chemical Vapor Deposition (CVD) growth process.
Type IIa

ADDITIONAL GRADING INFORMATION

Polish **EXCELLENT**
Symmetry **EXCELLENT**
Fluorescence **NONE**
Inscription(s) **IGI LG794684380**
Comments: This Laboratory Grown Diamond was created by Chemical Vapor Deposition (CVD) growth process.
Type IIa

COLOR

D E F G H I J Faint Very Light Light

CLARITY

FL	IF	VVS ¹⁻²	VS ¹⁻²	SI ¹⁻²	I ¹⁻³
Flawless	Internally Flawless	Very Very Slightly Included	Very Slightly Included	Slightly Included	Included



April 22, 2026
IGI Report No **LG794684380**
RECTANGULAR CUSHION MIXED CUT
12.41 X 8.82 X 5.85 MM
Carat Weight **6.20 CARATS**
Color Grade **E**
Clarity Grade **VVS 1**
Depth **66.3%**
Table **65%**
Girdle **Medium to Slightly Thick (Faceted)**
Culet **Long**
Polish **EXCELLENT**
Symmetry **EXCELLENT**
Fluorescence **NONE**
Inscription(s) **IGI LG794684380**
Comments: This Laboratory Grown Diamond was created by Chemical Vapor Deposition (CVD) growth process.
Type IIa