



**LABORATORY GROWN DIAMOND REPORT**

May 2, 2026  
 IGI Report Number **LG794683915**  
 Description **LABORATORY GROWN DIAMOND**  
 Shape and Cutting Style **LOZENGE STEP CUT**  
 Measurements **7.34 X 5.22 X 2.90 MM**

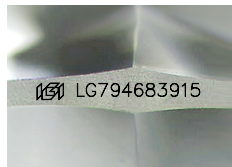
**GRADING RESULTS**

Carat Weight **0.58 CARAT**  
 Color Grade **F**  
 Clarity Grade **VS 1**

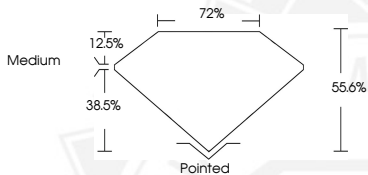
**ADDITIONAL GRADING INFORMATION**

Polish **VERY GOOD**  
 Symmetry **EXCELLENT**  
 Fluorescence **NONE**  
 Inscription(s) **IGI LG794683915**

Comments: This Laboratory Grown Diamond was created by  
 Chemical Vapor Deposition (CVD) growth process.  
 Type IIa



Sample Image Used



May 2, 2026  
 IGI Report Number **LG794683915**  
 LOZENGE STEP CUT  
 LABORATORY GROWN DIAMOND  
 7.34 X 5.22 X 2.90 MM  
 Carat Weight **0.58 CARAT**  
 Color Grade **F**  
 Clarity Grade **VS 1**  
 Polish **VERY GOOD**  
 Symmetry **EXCELLENT**  
 Fluorescence **NONE**  
 Inscription(s) **IGI LG794683915**

Comments: This Laboratory Grown  
 Diamond was created by  
 Chemical Vapor Deposition (CVD)  
 growth process. Type IIa



May 2, 2026  
 IGI Report Number **LG794683915**  
 LOZENGE STEP CUT  
 LABORATORY GROWN DIAMOND  
 7.34 X 5.22 X 2.90 MM  
 Carat Weight **0.58 CARAT**  
 Color Grade **F**  
 Clarity Grade **VS 1**  
 Polish **VERY GOOD**  
 Symmetry **EXCELLENT**  
 Fluorescence **NONE**  
 Inscription(s) **IGI LG794683915**

Comments: This Laboratory Grown  
 Diamond was created by  
 Chemical Vapor Deposition (CVD)  
 growth process. Type IIa



THIS DOCUMENT WAS PRODUCED WITH THE FOLLOWING SECURITY MEASURES: SPECIAL DOCUMENT PAPER, INK SCREENS, WATERMARK, BACKGROUND DESIGNS, HOLOGRAM AND OTHER SECURITY FEATURES NOT LISTED AND DO EXCEED DOCUMENT SECURITY INDUSTRY GUIDELINES.