



ELECTRONIC COPY

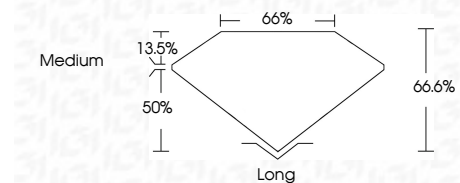
LG794683559
Report verification at igi.org



April 27, 2026
IGI Report Number **LG794683559**
Description **LABORATORY GROWN DIAMOND**

Shape and Cutting Style **EMERALD CUT**
Measurements **16.15 X 11.23 X 7.48 MM**

GRADING RESULTS
Carat Weight **13.30 CARATS**
Color Grade **F**
Clarity Grade **VVS 2**



ADDITIONAL GRADING INFORMATION
Polish **EXCELLENT**
Symmetry **EXCELLENT**
Fluorescence **NONE**
Inscription(s) **IGI LG794683559**
Comments: This Laboratory Grown Diamond was created by Chemical Vapor Deposition (CVD) growth process. Type IIa

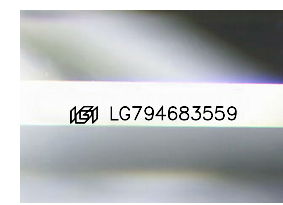
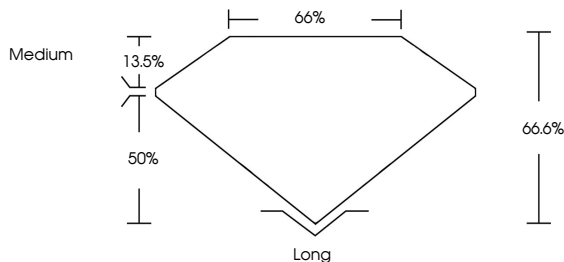


April 27, 2026
IGI Report No LG794683559
EMERALD CUT
16.15 X 11.23 X 7.48 MM
Carat Weight **13.30 CARATS**
Color Grade **F**
Clarity Grade **VVS 2**
Depth **66.6%**
Table **66%**
Girdle **Medium**
Culet **Long**
Polish **EXCELLENT**
Symmetry **EXCELLENT**
Fluorescence **NONE**
Inscription(s) **IGI LG794683559**
Comments: This Laboratory Grown Diamond was created by Chemical Vapor Deposition (CVD) growth process. Type IIa

April 27, 2026
IGI Report Number **LG794683559**
Description **LABORATORY GROWN DIAMOND**
Shape and Cutting Style **EMERALD CUT**
Measurements **16.15 X 11.23 X 7.48 MM**
GRADING RESULTS
Carat Weight **13.30 CARATS**
Color Grade **F**
Clarity Grade **VVS 2**
ADDITIONAL GRADING INFORMATION
Polish **EXCELLENT**
Symmetry **EXCELLENT**
Fluorescence **NONE**
Inscription(s) **IGI LG794683559**

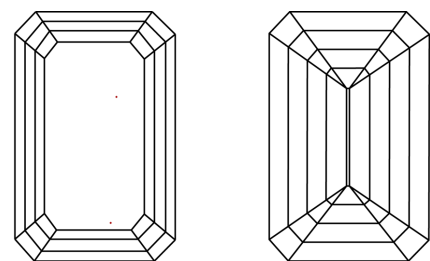
Comments: This Laboratory Grown Diamond was created by Chemical Vapor Deposition (CVD) growth process. Type IIa

PROPORTIONS



Sample Image Used

CLARITY CHARACTERISTICS



KEY TO SYMBOLS
Red symbols indicate internal characteristics.
Green symbols indicate external characteristics.

COLOR

D	E	F	G	H	I	J	Faint	Very Light	Light
---	---	---	---	---	---	---	-------	------------	-------

CLARITY

FL	IF	VVS ¹⁻²	VS ¹⁻²	SI ¹⁻²	I ¹⁻³
Flawless	Internally Flawless	Very Very Slightly Included	Very Slightly Included	Slightly Included	Included

