



**LABORATORY GROWN DIAMOND REPORT**

May 11, 2026  
 IGI Report Number **LG794682707**  
 Description **LABORATORY GROWN DIAMOND**  
 Shape and Cutting Style **ROUND BRILLIANT**  
 Measurements **5.16 - 5.18 X 3.21 MM**

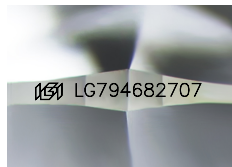
**GRADING RESULTS**

Carat Weight **0.52 CARAT**  
 Color Grade **FANCY YELLOW**  
 Clarity Grade **VS 1**  
 Cut Grade **IDEAL**

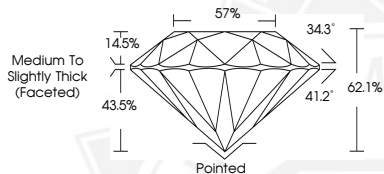
**ADDITIONAL GRADING INFORMATION**

Polish **EXCELLENT**  
 Symmetry **EXCELLENT**  
 Fluorescence **NONE**  
 Inscription(s) **IGI LG794682707**

Comments: As Grown - No indication of post-growth treatment. This Laboratory Grown Diamond was created by High Pressure High Temperature (HPHT) growth process.



Sample Image Used



May 11, 2026  
 IGI Report Number **LG794682707**  
 ROUND BRILLIANT  
 LABORATORY GROWN DIAMOND  
 5.16 - 5.18 X 3.21 MM  
 Carat Weight **0.52 CARAT**  
 Color Grade **FANCY YELLOW**  
 Clarity Grade **VS 1**  
 Cut Grade **IDEAL**  
 Polish **EXCELLENT**  
 Symmetry **EXCELLENT**  
 Fluorescence **NONE**  
 Inscription(s) **IGI LG794682707**

Comments: As Grown - No indication of post-growth treatment. This Laboratory Grown Diamond was created by High Pressure High Temperature (HPHT) growth process.



May 11, 2026  
 IGI Report Number **LG794682707**  
 ROUND BRILLIANT  
 LABORATORY GROWN DIAMOND  
 5.16 - 5.18 X 3.21 MM  
 Carat Weight **0.52 CARAT**  
 Color Grade **FANCY YELLOW**  
 Clarity Grade **VS 1**  
 Cut Grade **IDEAL**  
 Polish **EXCELLENT**  
 Symmetry **EXCELLENT**  
 Fluorescence **NONE**  
 Inscription(s) **IGI LG794682707**

Comments: As Grown - No indication of post-growth treatment. This Laboratory Grown Diamond was created by High Pressure High Temperature (HPHT) growth process.



THIS DOCUMENT WAS PRODUCED WITH THE FOLLOWING SECURITY MEASURES: SPECIAL DOCUMENT PAPER, INK SCREENS, WATERMARK, BACKGROUND DESIGNS, HOLOGRAM AND OTHER SECURITY FEATURES NOT LISTED AND DO EXCEED DOCUMENT SECURITY INDUSTRY GUIDELINES.