



LABORATORY GROWN DIAMOND REPORT

May 11, 2026
 IGI Report Number **LG794682697**
 Description **LABORATORY GROWN DIAMOND**
 Shape and Cutting Style **ROUND BRILLIANT**
 Measurements **5.48 - 5.52 X 3.43 MM**

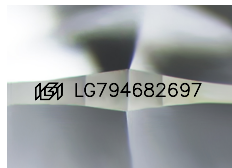
GRADING RESULTS

Carat Weight **0.64 CARAT**
 Color Grade **FANCY YELLOW**
 Clarity Grade **VS 1**
 Cut Grade **IDEAL**

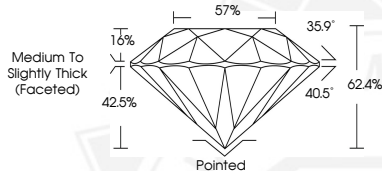
ADDITIONAL GRADING INFORMATION

Polish **EXCELLENT**
 Symmetry **EXCELLENT**
 Fluorescence **NONE**
 Inscription(s) **IGI LG794682697**

Comments: As Grown - No indication of post-growth treatment. This Laboratory Grown Diamond was created by High Pressure High Temperature (HPHT) growth process.



Sample Image Used



May 11, 2026
 IGI Report Number **LG794682697**
 ROUND BRILLIANT
 LABORATORY GROWN DIAMOND
 5.48 - 5.52 X 3.43 MM
 Carat Weight **0.64 CARAT**
 Color Grade **FANCY YELLOW**
 Clarity Grade **VS 1**
 Cut Grade **IDEAL**
 Polish **EXCELLENT**
 Symmetry **EXCELLENT**
 Fluorescence **NONE**
 Inscription(s) **IGI LG794682697**

Comments: As Grown - No indication of post-growth treatment. This Laboratory Grown Diamond was created by High Pressure High Temperature (HPHT) growth process.



May 11, 2026
 IGI Report Number **LG794682697**
 ROUND BRILLIANT
 LABORATORY GROWN DIAMOND
 5.48 - 5.52 X 3.43 MM
 Carat Weight **0.64 CARAT**
 Color Grade **FANCY YELLOW**
 Clarity Grade **VS 1**
 Cut Grade **IDEAL**
 Polish **EXCELLENT**
 Symmetry **EXCELLENT**
 Fluorescence **NONE**
 Inscription(s) **IGI LG794682697**

Comments: As Grown - No indication of post-growth treatment. This Laboratory Grown Diamond was created by High Pressure High Temperature (HPHT) growth process.

THIS DOCUMENT WAS PRODUCED WITH THE FOLLOWING SECURITY MEASURES: SPECIAL DOCUMENT PAPER, INK SCREENS, WATERMARK, BACKGROUND DESIGNS, HOLOGRAM AND OTHER SECURITY FEATURES NOT LISTED AND DO EXCEED DOCUMENT SECURITY INDUSTRY GUIDELINES.