



ELECTRONIC COPY

LG794682461 Report verification at igi.org



April 27, 2026 IGI Report Number LG794682461 Description LABORATORY GROWN DIAMOND Shape and Cutting Style ROUND BRILLIANT Measurements 6.54 - 6.56 X 4.02 MM GRADING RESULTS Carat Weight 1.06 CARAT Color Grade D Clarity Grade INTERNALLY FLAWLESS Cut Grade IDEAL

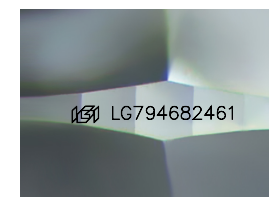
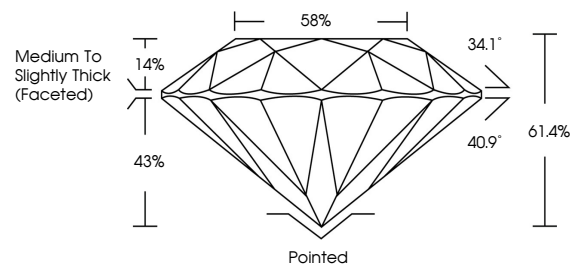
April 27, 2026 IGI Report Number LG794682461 Description LABORATORY GROWN DIAMOND Shape and Cutting Style ROUND BRILLIANT Measurements 6.54 - 6.56 X 4.02 MM GRADING RESULTS Carat Weight 1.06 CARAT Color Grade D Clarity Grade INTERNALLY FLAWLESS Cut Grade IDEAL

ADDITIONAL GRADING INFORMATION

Polish EXCELLENT Symmetry EXCELLENT Fluorescence NONE Inscription(s) IGI LG794682461

Comments: As Grown - No indication of post-growth treatment. This Laboratory Grown Diamond was created by High Pressure High Temperature (HPHT) growth process. Type II

PROPORTIONS



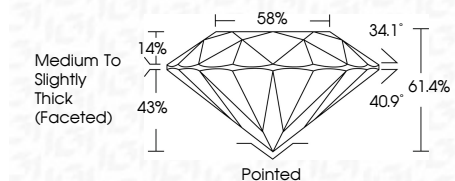
Sample Image Used

COLOR

D E F G H I J Faint Very Light Light

CLARITY

FL IF VS 1-2 VS 1-2 SI 1-2 I 1-3 Flawless Internally Flawless Very Very Slightly Included Very Slightly Included Slightly Included Included



ADDITIONAL GRADING INFORMATION

Polish EXCELLENT Symmetry EXCELLENT Fluorescence NONE Inscription(s) IGI LG794682461 Comments: As Grown - No indication of post-growth treatment. This Laboratory Grown Diamond was created by High Pressure High Temperature (HPHT) growth process. Type II



April 27, 2026 IGI Report No LG794682461 ROUND BRILLIANT 6.54 - 6.56 X 4.02 MM 1.06 CARAT D Color Grade D IF Clarity Grade IDEAL 61.4% Depth 43% Table 14% Girdle Medium To Slightly Thick (Faceted) 34.1° Crown Angle 40.9° Pavilion Angle Pointed EXCELLENT Polish EXCELLENT Symmetry EXCELLENT Fluorescence NONE Inscriptions(s) IGI LG794682461 Comments: As Grown - No indication of post-growth treatment. This Laboratory Grown Diamond was created by High Pressure High Temperature (HPHT) growth process. Type II