



# INTERNATIONAL GEMOLOGICAL INSTITUTE

## LABORATORY GROWN DIAMOND REPORT

April 28, 2026  
 IGI Report Number **LG794682432**  
 Description **LABORATORY GROWN DIAMOND**  
 Shape and Cutting Style **ROUND BRILLIANT**  
 Measurements **5.38 - 5.40 X 3.24 MM**

### GRADING RESULTS

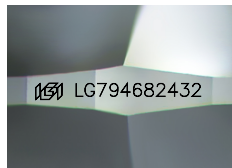
Carat Weight **0.58 CARAT**  
 Color Grade **D**  
 Clarity Grade **VVS 2**  
 Cut Grade **EXCELLENT**

### ADDITIONAL GRADING INFORMATION

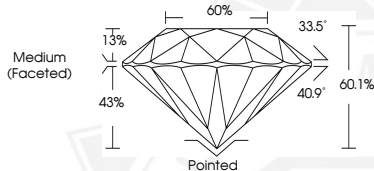
Polish **VERY GOOD**  
 Symmetry **EXCELLENT**  
 Fluorescence **NONE**  
 Inscription(s) **IGI LG794682432**

Comments: As Grown - No indication of post-growth treatment.  
 This Laboratory Grown Diamond was created by High Pressure High  
 Temperature (HPHT) growth process.  
 Type II

ELECTRONIC COPY



Sample Image Used



April 28, 2026  
 IGI Report Number **LG794682432**  
 ROUND BRILLIANT  
 LABORATORY GROWN DIAMOND  
 5.38 - 5.40 X 3.24 MM  
 Carat Weight **0.58 CARAT**  
 Color Grade **D**  
 Clarity Grade **VVS 2**  
 Cut Grade **EXCELLENT**  
 Polish **VERY GOOD**  
 Symmetry **EXCELLENT**  
 Fluorescence **NONE**  
 Inscription(s) **IGI LG794682432**

Comments: As Grown - No indication of post-growth treatment. This Laboratory Grown Diamond was created by High Pressure High Temperature (HPHT) growth process. Type II



April 28, 2026  
 IGI Report Number **LG794682432**  
 ROUND BRILLIANT  
 LABORATORY GROWN DIAMOND  
 5.38 - 5.40 X 3.24 MM  
 Carat Weight **0.58 CARAT**  
 Color Grade **D**  
 Clarity Grade **VVS 2**  
 Cut Grade **EXCELLENT**  
 Polish **VERY GOOD**  
 Symmetry **EXCELLENT**  
 Fluorescence **NONE**  
 Inscription(s) **IGI LG794682432**

Comments: As Grown - No indication of post-growth treatment. This Laboratory Grown Diamond was created by High Pressure High Temperature (HPHT) growth process. Type II



THIS DOCUMENT WAS PRODUCED WITH THE FOLLOWING SECURITY MEASURES: SPECIAL DOCUMENT PAPER, INK SCREENS, WATERMARK, BACKGROUND DESIGNS, HOLOGRAM AND OTHER SECURITY FEATURES NOT LISTED AND DO EXCEED DOCUMENT SECURITY INDUSTRY GUIDELINES.

For terms & conditions and to verify this report, please visit [www.igi.org](http://www.igi.org)