



**ELECTRONIC COPY**

**LABORATORY GROWN DIAMOND REPORT**

May 4, 2026  
IGI Report Number **LG794681421**  
Description **LABORATORY GROWN DIAMOND**  
Shape and Cutting Style **CUT CORNERED RECTANGULAR MODIFIED BRILLIANT**  
Measurements **12.42 X 8.96 X 6.47 MM**

**GRADING RESULTS**

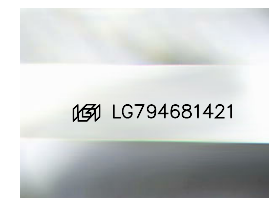
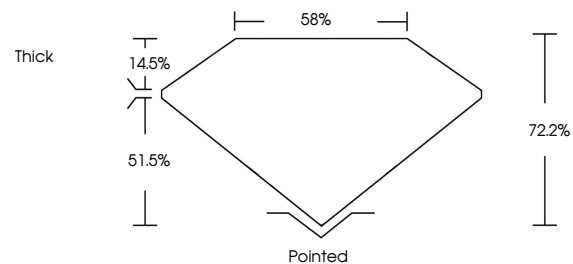
Carat Weight **7.06 CARATS**  
Color Grade **FANCY VIVID YELLOW**  
Clarity Grade **VS 1**

**ADDITIONAL GRADING INFORMATION**

Polish **EXCELLENT**  
Symmetry **EXCELLENT**  
Fluorescence **NONE**  
Inscription(s) **IGI LG794681421**

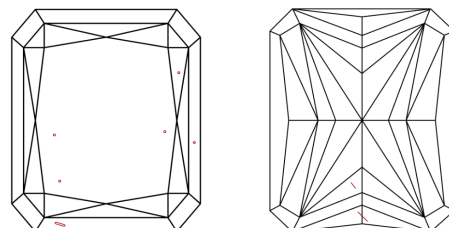
Comments: This Laboratory Grown Diamond was created by Chemical Vapor Deposition (CVD) growth process.

**PROPORTIONS**



Sample Image Used

**CLARITY CHARACTERISTICS**



**KEY TO SYMBOLS**

Red symbols indicate internal characteristics.  
Green symbols indicate external characteristics.

**COLOR**

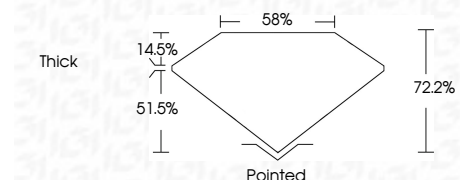
D E F G H I J Faint Very Light Light

**CLARITY**

FL	IF	VS <sup>1-2</sup>	VS <sup>1-2</sup>	SI <sup>1-2</sup>	I <sup>1-3</sup>
Flawless	Internally Flawless	Very Very Slightly Included	Very Slightly Included	Slightly Included	Included



May 4, 2026  
IGI Report Number **LG794681421**  
Description **LABORATORY GROWN DIAMOND**  
Shape and Cutting Style **CUT CORNERED RECTANGULAR MODIFIED BRILLIANT**  
Measurements **12.42 X 8.96 X 6.47 MM**  
**GRADING RESULTS**  
Carat Weight **7.06 CARATS**  
Color Grade **FANCY VIVID YELLOW**  
Clarity Grade **VS 1**



**ADDITIONAL GRADING INFORMATION**

Polish **EXCELLENT**  
Symmetry **EXCELLENT**  
Fluorescence **NONE**  
Inscription(s) **IGI LG794681421**  
Comments: This Laboratory Grown Diamond was created by Chemical Vapor Deposition (CVD) growth process.



**IGI**



May 4, 2026  
IGI Report No **LG794681421**  
**CUT CORNERED RECT. MODIFIED BRILLIANT**  
**12.42 X 8.96 X 6.47 MM**  
Carat Weight **7.06 CARATS**  
Color Grade **FANCY VIVID YELLOW**  
Clarity Grade **VS 1**  
Depth **72.2%**  
Table **58%**  
Girdle **Thick**  
Culet **Pointed**  
Polish **EXCELLENT**  
Symmetry **EXCELLENT**  
Fluorescence **NONE**  
Inscription(s) **IGI LG794681421**

Comments: This Laboratory Grown Diamond was created by Chemical Vapor Deposition (CVD) growth process.