



ELECTRONIC COPY

LG794681280
Report verification at igi.org



April 29, 2026
IGI Report Number **LG794681280**
Description **LABORATORY GROWN DIAMOND**
Shape and Cutting Style **CUT CORNERED
RECTANGULAR MODIFIED
BRILLIANT**
Measurements **11.51 X 7.65 X 5.27 MM**
GRADING RESULTS
Carat Weight **4.14 CARATS**
Color Grade **F**
Clarity Grade **VS 1**

April 29, 2026
IGI Report Number **LG794681280**
Description **LABORATORY GROWN DIAMOND**
Shape and Cutting Style **CUT CORNERED RECTANGULAR
MODIFIED BRILLIANT**
Measurements **11.51 X 7.65 X 5.27 MM**

GRADING RESULTS

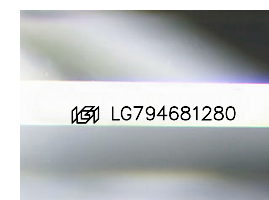
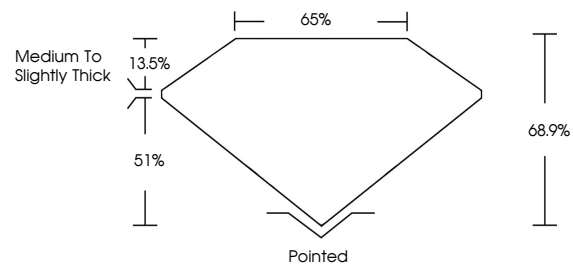
Carat Weight **4.14 CARATS**
Color Grade **F**
Clarity Grade **VS 1**

ADDITIONAL GRADING INFORMATION

Polish **EXCELLENT**
Symmetry **EXCELLENT**
Fluorescence **NONE**
Inscription(s) **IGI LG794681280**

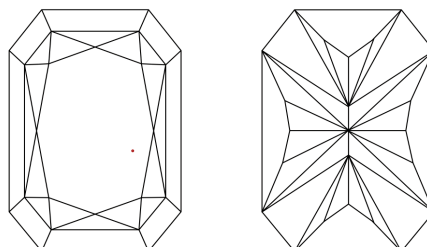
Comments: This Laboratory Grown Diamond was created by Chemical Vapor Deposition (CVD) growth process.
Type IIa

PROPORTIONS



Sample Image Used

CLARITY CHARACTERISTICS



KEY TO SYMBOLS

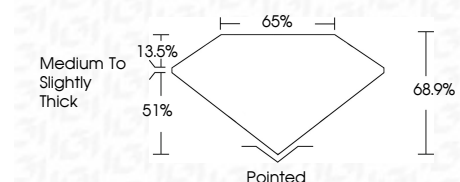
Red symbols indicate internal characteristics.
Green symbols indicate external characteristics.

COLOR

D E F G H I J Faint Very Light Light

CLARITY

FL	IF	VS ¹⁻²	VS ¹⁻²	SI ¹⁻²	I ¹⁻³
Flawless	Internally Flawless	Very Very Slightly Included	Very Slightly Included	Slightly Included	Included



ADDITIONAL GRADING INFORMATION

Polish **EXCELLENT**
Symmetry **EXCELLENT**
Fluorescence **NONE**
Inscription(s) **IGI LG794681280**
Comments: This Laboratory Grown Diamond was created by Chemical Vapor Deposition (CVD) growth process.
Type IIa



April 29, 2026
IGI Report No LG794681280
CUT CORNERED RECT. MODIFIED BRILLIANT
11.51 X 7.65 X 5.27 MM
4.14 CARATS
F
VS 1
68.9%
51%
Medium to Slightly Thick
Pointed
EXCELLENT
EXCELLENT
NONE
IGI LG794681280
Comments: This Laboratory Grown Diamond was created by Chemical Vapor Deposition (CVD) growth process.
Type IIa