



**INTERNATIONAL  
GEMOLOGICAL  
INSTITUTE**

**ELECTRONIC COPY**



April 28, 2026

**IGI Report Number LG794680514**  
**SQUARE CUSHION MODIFIED**  
**BRILLIANT**

**LABORATORY GROWN DIAMOND**  
**4.96 X 4.93 X 3.37 MM**

Carat Weight **0.72 CARAT**  
Color Grade **E**  
Clarity Grade **VVS 2**  
Polish **VERY GOOD**  
Symmetry **VERY GOOD**  
Fluorescence **NONE**  
Inscription(s) **IGI LG794680514**

Comments: This Laboratory Grown Diamond was created by Chemical Vapor Deposition (CVD) growth process. Type IIa

**LABORATORY GROWN DIAMOND REPORT**

April 28, 2026

IGI Report Number

**LG794680514**

Description

**LABORATORY GROWN DIAMOND**

Shape and Cutting Style

**SQUARE CUSHION MODIFIED BRILLIANT**

Measurements

**4.96 X 4.93 X 3.37 MM**

**GRADING RESULTS**

Carat Weight

**0.72 CARAT**

Color Grade

**E**

Clarity Grade

**VVS 2**

**ADDITIONAL GRADING INFORMATION**

Polish

**VERY GOOD**

Symmetry

**VERY GOOD**

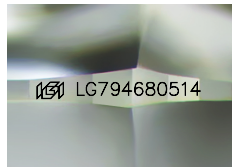
Fluorescence

**NONE**

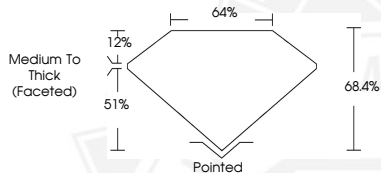
Inscription(s)

**IGI LG794680514**

Comments: This Laboratory Grown Diamond was created by Chemical Vapor Deposition (CVD) growth process. Type IIa



Sample Image Used



April 28, 2026

**IGI Report Number LG794680514**  
**SQUARE CUSHION MODIFIED**  
**BRILLIANT**

**LABORATORY GROWN DIAMOND**  
**4.96 X 4.93 X 3.37 MM**

Carat Weight **0.72 CARAT**  
Color Grade **E**  
Clarity Grade **VVS 2**  
Polish **VERY GOOD**  
Symmetry **VERY GOOD**  
Fluorescence **NONE**  
Inscription(s) **IGI LG794680514**

Comments: This Laboratory Grown Diamond was created by Chemical Vapor Deposition (CVD) growth process. Type IIa



THIS DOCUMENT WAS PRODUCED WITH THE FOLLOWING SECURITY MEASURES: SPECIAL DOCUMENT PAPER, INK SCREENS, WATERMARK, BACKGROUND DESIGNS, HOLOGRAM AND OTHER SECURITY FEATURES NOT LISTED AND DO EXCEED DOCUMENT SECURITY INDUSTRY GUIDELINES.

For terms & conditions and to verify this report, please visit [www.igi.org](http://www.igi.org)