



**INTERNATIONAL  
GEMOLOGICAL  
INSTITUTE**

**ELECTRONIC COPY**

**LABORATORY GROWN DIAMOND REPORT**

April 29, 2026  
 IGI Report Number **LG794680476**  
 Description **LABORATORY GROWN DIAMOND**  
 Shape and Cutting Style **PEAR MODIFIED BRILLIANT**  
 Measurements **6.64 X 4.08 X 2.61 MM**

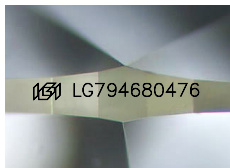
**GRADING RESULTS**

Carat Weight **0.53 CARAT**  
 Color Grade **FANCY INTENSE GREEN**  
 Clarity Grade **VVS 2**

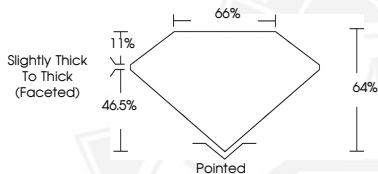
**ADDITIONAL GRADING INFORMATION**

Polish **VERY GOOD**  
 Symmetry **VERY GOOD**  
 Fluorescence **NONE**  
 Inscription(s) **IGI LG794680476**

Comments: This Laboratory Grown Diamond was created by High Pressure High Temperature (HPHT) growth process. Indications of post-growth treatment.



Sample Image Used



April 29, 2026  
 IGI Report Number **LG794680476**  
**PEAR MODIFIED BRILLIANT**  
**LABORATORY GROWN DIAMOND**  
**6.64 X 4.08 X 2.61 MM**  
 Carat Weight **0.53 CARAT**  
 Color Grade **FANCY INTENSE GREEN**  
 Clarity Grade **VVS 2**  
 Polish **VERY GOOD**  
 Symmetry **VERY GOOD**  
 Fluorescence **NONE**  
 Inscription(s) **IGI LG794680476**

Comments: This Laboratory Grown Diamond was created by High Pressure High Temperature (HPHT) growth process. Indications of post-growth treatment.



April 29, 2026  
 IGI Report Number **LG794680476**  
**PEAR MODIFIED BRILLIANT**  
**LABORATORY GROWN DIAMOND**  
**6.64 X 4.08 X 2.61 MM**  
 Carat Weight **0.53 CARAT**  
 Color Grade **FANCY INTENSE GREEN**  
 Clarity Grade **VVS 2**  
 Polish **VERY GOOD**  
 Symmetry **VERY GOOD**  
 Fluorescence **NONE**  
 Inscription(s) **IGI LG794680476**

Comments: This Laboratory Grown Diamond was created by High Pressure High Temperature (HPHT) growth process. Indications of post-growth treatment.



THIS DOCUMENT WAS PRODUCED WITH THE FOLLOWING SECURITY MEASURES: SPECIAL DOCUMENT PAPER, INK SCREENS, WATERMARK, BACKGROUND DESIGNS, HOLOGRAM AND OTHER SECURITY FEATURES NOT LISTED AND DO EXCEED DOCUMENT SECURITY INDUSTRY GUIDELINES.

For terms & conditions and to verify this report, please visit [www.igi.org](http://www.igi.org)