



ELECTRONIC COPY

LG794680336
Report verification at igi.org



May 8, 2026

IGI Report Number **LG794680336**

Description **LABORATORY GROWN DIAMOND**

Shape and Cutting Style **CUSHION BRILLIANT**

Measurements **9.84 X 6.99 X 4.76 MM**

GRADING RESULTS

Carat Weight **2.41 CARATS**

Color Grade **FANCY VIVID PINK**

Clarity Grade **VS 1**

May 8, 2026
IGI Report Number **LG794680336**
Description **LABORATORY GROWN DIAMOND**
Shape and Cutting Style **CUSHION BRILLIANT**
Measurements **9.84 X 6.99 X 4.76 MM**

GRADING RESULTS

Carat Weight **2.41 CARATS**

Color Grade **FANCY VIVID PINK**

Clarity Grade **VS 1**

ADDITIONAL GRADING INFORMATION

Polish **EXCELLENT**

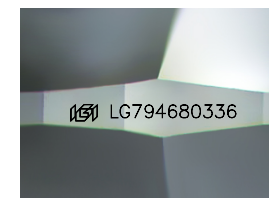
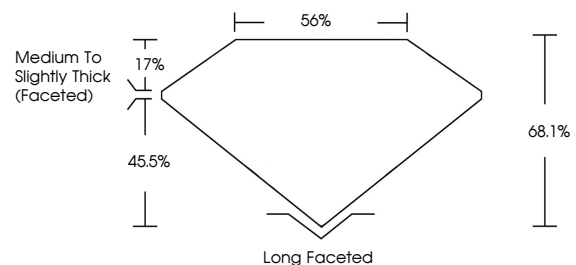
Symmetry **EXCELLENT**

Fluorescence **STRONG**

Inscription(s) **LG794680336**

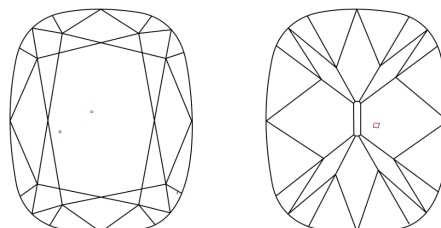
Comments: This Laboratory Grown Diamond was created by Chemical Vapor Deposition (CVD) growth process.
Indications of post-growth treatment.

PROPORTIONS



Sample Image Used

CLARITY CHARACTERISTICS



KEY TO SYMBOLS

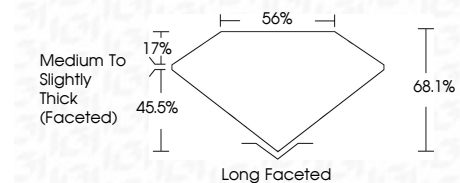
Red symbols indicate internal characteristics.
Green symbols indicate external characteristics.

COLOR

D E F G H I J Faint Very Light Light

CLARITY

FL	IF	VS ¹⁻²	VS ¹⁻²	SI ¹⁻²	I ¹⁻³
Flawless	Internally Flawless	Very Very Slightly Included	Very Slightly Included	Slightly Included	Included



ADDITIONAL GRADING INFORMATION

Polish **EXCELLENT**

Symmetry **EXCELLENT**

Fluorescence **STRONG**

Inscription(s) **LG794680336**

Comments: This Laboratory Grown Diamond was created by Chemical Vapor Deposition (CVD) growth process.
Indications of post-growth treatment.



IGI



May 8, 2026
IGI Report No LG794680336
CUSHION BRILLIANT

2.41 CARATS
Carat Weight
FANCY VIVID PINK
Color Grade

VS 1
Clarity Grade
68.1%
Depth
56%
Table
Medium to Slightly Thick (Faceted)
Girdle

Long Faceted
Culet
EXCELLENT
Polish
EXCELLENT
Symmetry
STRONG
Fluorescence
Inscription(s) **LG794680336**

Comments: This Laboratory Grown Diamond was created by Chemical Vapor Deposition (CVD) growth process.
Indications of post-growth treatment.