



ELECTRONIC COPY

LG794680321
Report verification at igi.org



May 5, 2026

IGI Report Number **LG794680321**

Description **LABORATORY GROWN DIAMOND**

Shape and Cutting Style **OCTAGONAL STEP CUT**

Measurements **9.95 X 10.09 X 6.26 MM**

GRADING RESULTS

Carat Weight **4.43 CARATS**

Color Grade **FANCY INTENSE PINK**

Clarity Grade **VS 1**

May 5, 2026

IGI Report Number **LG794680321**

Description **LABORATORY GROWN DIAMOND**

Shape and Cutting Style **OCTAGONAL STEP CUT**

Measurements **9.95 X 10.09 X 6.26 MM**

GRADING RESULTS

Carat Weight **4.43 CARATS**

Color Grade **FANCY INTENSE PINK**

Clarity Grade **VS 1**

ADDITIONAL GRADING INFORMATION

Polish **EXCELLENT**

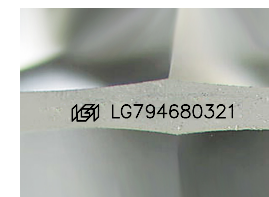
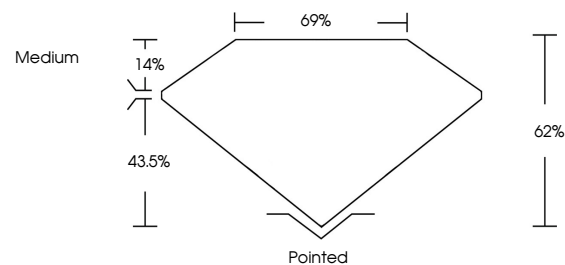
Symmetry **EXCELLENT**

Fluorescence **SLIGHT**

Inscription(s) **LG794680321**

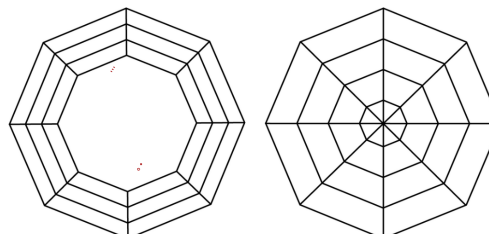
Comments: This Laboratory Grown Diamond was created by Chemical Vapor Deposition (CVD) growth process. Indications of post-growth treatment.

PROPORTIONS



Sample Image Used

CLARITY CHARACTERISTICS



KEY TO SYMBOLS

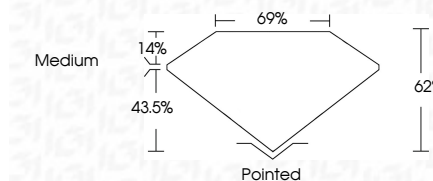
Red symbols indicate internal characteristics.
Green symbols indicate external characteristics.

COLOR

D E F G H I J Faint Very Light Light

CLARITY

FL	IF	VS ¹⁻²	VS ¹⁻²	SI ¹⁻²	I ¹⁻³
Flawless	Internally Flawless	Very Very Slightly Included	Very Slightly Included	Slightly Included	Included



ADDITIONAL GRADING INFORMATION

Polish **EXCELLENT**

Symmetry **EXCELLENT**

Fluorescence **SLIGHT**

Inscription(s) **LG794680321**

Comments: This Laboratory Grown Diamond was created by Chemical Vapor Deposition (CVD) growth process. Indications of post-growth treatment.



IGI



May 5, 2026
IGI Report No LG794680321
OCTAGONAL STEP CUT
9.95 X 10.09 X 6.26 MM
4.43 CARATS
FANCY INTENSE PINK
VS 1
62%
69%
Medium
Pointed
EXCELLENT
EXCELLENT
SLIGHT
IGI LG794680321

Comments: This Laboratory Grown Diamond was created by Chemical Vapor Deposition (CVD) growth process. Indications of post-growth treatment.