



ELECTRONIC COPY

LG794678432
Report verification at igi.org



April 28, 2026
IGI Report Number **LG794678432**
Description **LABORATORY GROWN DIAMOND**
Shape and Cutting Style **SQUARE CUSHION MODIFIED BRILLIANT**
Measurements **8.98 X 8.93 X 5.74 MM**
GRADING RESULTS
Carat Weight **4.15 CARATS**
Color Grade **FANCY VIVID PINK**
Clarity Grade **VS 1**

LABORATORY GROWN DIAMOND REPORT

April 28, 2026
IGI Report Number **LG794678432**
Description **LABORATORY GROWN DIAMOND**
Shape and Cutting Style **SQUARE CUSHION MODIFIED BRILLIANT**
Measurements **8.98 X 8.93 X 5.74 MM**

GRADING RESULTS

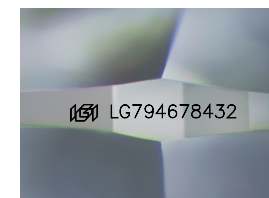
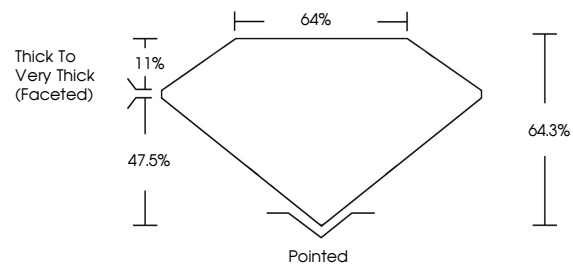
Carat Weight **4.15 CARATS**
Color Grade **FANCY VIVID PINK**
Clarity Grade **VS 1**

ADDITIONAL GRADING INFORMATION

Polish **EXCELLENT**
Symmetry **EXCELLENT**
Fluorescence **SLIGHT**
Inscription(s) **IGI LG794678432**

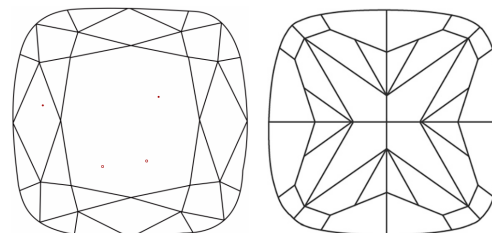
Comments: This Laboratory Grown Diamond was created by Chemical Vapor Deposition (CVD) growth process. Indications of post-growth treatment.

PROPORTIONS



Sample Image Used

CLARITY CHARACTERISTICS



KEY TO SYMBOLS

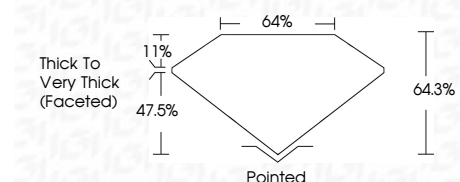
Red symbols indicate internal characteristics.
Green symbols indicate external characteristics.

COLOR

D E F G H I J Faint Very Light Light

CLARITY

FL	IF	VS ¹⁻²	VS ¹⁻²	SI ¹⁻²	I ¹⁻³
Flawless	Internally Flawless	Very Very Slightly Included	Very Slightly Included	Slightly Included	Included



ADDITIONAL GRADING INFORMATION

Polish **EXCELLENT**
Symmetry **EXCELLENT**
Fluorescence **SLIGHT**
Inscription(s) **IGI LG794678432**
Comments: This Laboratory Grown Diamond was created by Chemical Vapor Deposition (CVD) growth process. Indications of post-growth treatment.



April 28, 2026
IGI Report No **LG794678432**
SQUARE CUSHION MODIFIED BRILLIANT
8.98 X 8.93 X 5.74 MM
Carat Weight **4.15 CARATS**
Color Grade **FANCY VIVID PINK**
Clarity Grade **VS 1**
Depth **64.3%**
Table **64%**
Girdle **Thick to Very Thick (Faceted)**
Culet **Pointed**
Polish **EXCELLENT**
Symmetry **EXCELLENT**
Fluorescence **SLIGHT**
Inscription(s) **IGI LG794678432**
Comments: This Laboratory Grown Diamond was created by Chemical Vapor Deposition (CVD) growth process. Indications of post-growth treatment.