



ELECTRONIC COPY

LG794677681
Report verification at igi.org



April 28, 2026

IGI Report Number **LG794677681**

Description **LABORATORY GROWN DIAMOND**

Shape and Cutting Style **CUT CORNERED
RECTANGULAR MODIFIED
BRILLIANT**

Measurements **10.17 X 6.95 X 5.19 MM**

GRADING RESULTS

Carat Weight **3.58 CARATS**

Color Grade **FANCY VIVID YELLOW**

Clarity Grade **VS 1**

April 28, 2026

IGI Report Number **LG794677681**

Description **LABORATORY GROWN DIAMOND**

Shape and Cutting Style **CUT CORNERED RECTANGULAR
MODIFIED BRILLIANT**

Measurements **10.17 X 6.95 X 5.19 MM**

GRADING RESULTS

Carat Weight **3.58 CARATS**

Color Grade **FANCY VIVID YELLOW**

Clarity Grade **VS 1**

ADDITIONAL GRADING INFORMATION

Polish **EXCELLENT**

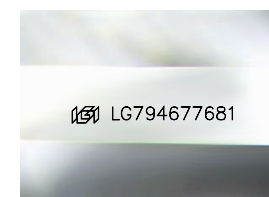
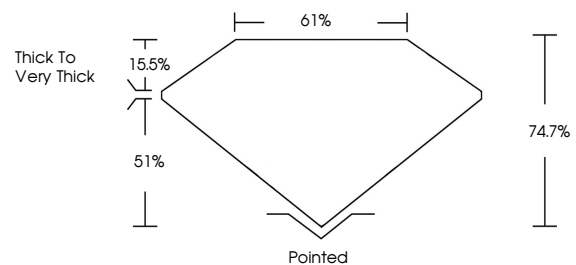
Symmetry **EXCELLENT**

Fluorescence **NONE**

Inscription(s) **IGI LG794677681**

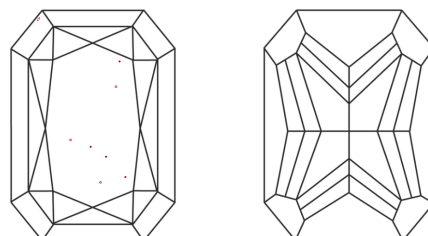
Comments: This Laboratory Grown Diamond was created by Chemical Vapor Deposition (CVD) growth process.

PROPORTIONS



Sample Image Used

CLARITY CHARACTERISTICS



KEY TO SYMBOLS

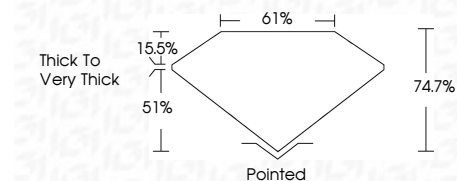
Red symbols indicate internal characteristics.
Green symbols indicate external characteristics.

COLOR

D E F G H I J Faint Very Light Light

CLARITY

FL	IF	VS ¹⁻²	VS ¹⁻²	SI ¹⁻²	I ¹⁻³
Flawless	Internally Flawless	Very Very Slightly Included	Very Slightly Included	Slightly Included	Included



ADDITIONAL GRADING INFORMATION

Polish **EXCELLENT**

Symmetry **EXCELLENT**

Fluorescence **NONE**

Inscription(s) **IGI LG794677681**

Comments: This Laboratory Grown Diamond was created by Chemical Vapor Deposition (CVD) growth process.



IGI



April 28, 2026
IGI Report No LG794677681
CUT CORNERED RECT. MODIFIED BRILLIANT
10.17 X 6.95 X 5.19 MM
Carat Weight 3.58 CARATS
Color Grade FANCY VIVID YELLOW
Clarity Grade VS 1
Depth 74.7%
Table 61%
Girdle Thick to Very Thick
Culet Pointed
Polish EXCELLENT
Symmetry EXCELLENT
Fluorescence NONE
Inscription(s) IGI LG794677681

Comments: This Laboratory Grown Diamond was created by Chemical Vapor Deposition (CVD) growth process.