



**ELECTRONIC COPY**

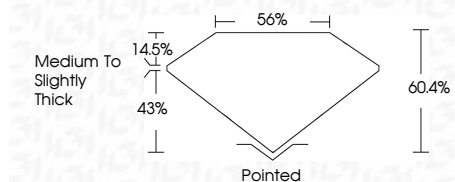
LG794677131  
Report verification at igi.org



April 24, 2026  
IGI Report Number **LG794677131**  
Description **LABORATORY GROWN DIAMOND**  
Shape and Cutting Style **HALF MOON BRILLIANT**  
Measurements **10.11 X 6.66 X 4.02 MM**

**GRADING RESULTS**

Carat Weight **1.71 CARAT**  
Color Grade **E**  
Clarity Grade **VVS 2**

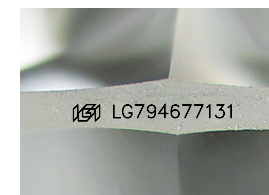


**ADDITIONAL GRADING INFORMATION**

Polish **EXCELLENT**  
Symmetry **EXCELLENT**  
Fluorescence **NONE**  
Inscription(s) **IGI LG794677131**  
Comments: This Laboratory Grown Diamond was created by Chemical Vapor Deposition (CVD) growth process. Type IIa

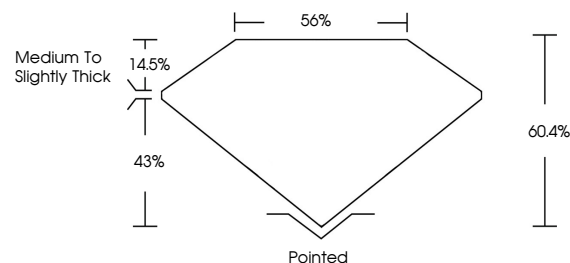


April 24, 2026  
IGI Report No **LG794677131**  
**HALF MOON BRILLIANT**  
10.11 X 6.66 X 4.02 MM  
Carat Weight **1.71 CARAT**  
Color Grade **E**  
Clarity Grade **VVS 2**  
Depth **43%**  
Table **14.5%**  
Girdle **Medium to Slightly Thick**  
Culet **Pointed**  
Polish **EXCELLENT**  
Symmetry **EXCELLENT**  
Fluorescence **NONE**  
Inscription(s) **IGI LG794677131**  
Comments: This Laboratory Grown Diamond was created by Chemical Vapor Deposition (CVD) growth process. Type IIa

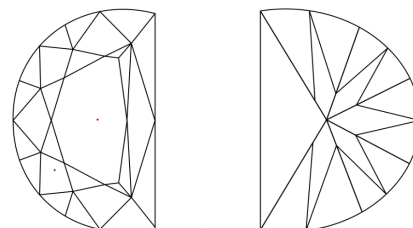


Sample Image Used

**PROPORTIONS**



**CLARITY CHARACTERISTICS**



**KEY TO SYMBOLS**

Red symbols indicate internal characteristics.  
Green symbols indicate external characteristics.

**COLOR**

D E F G H I J Faint Very Light Light

**CLARITY**

FL	IF	VVS <sup>1-2</sup>	VS <sup>1-2</sup>	SI <sup>1-2</sup>	I <sup>1-3</sup>
Flawless	Internally Flawless	Very Very Slightly Included	Very Slightly Included	Slightly Included	Included

