



ELECTRONIC COPY

LG794676350
Report verification at igi.org



May 2, 2026
IGI Report Number **LG794676350**
Description **LABORATORY GROWN DIAMOND**
Shape and Cutting Style **MODIFIED OCTAGONAL STEP CUT**
Measurements **12.50 X 6.31 X 4.04 MM**
GRADING RESULTS
Carat Weight **2.08 CARATS**
Color Grade **G**
Clarity Grade **VVS 2**

LABORATORY GROWN DIAMOND REPORT

May 2, 2026
IGI Report Number **LG794676350**
Description **LABORATORY GROWN DIAMOND**
Shape and Cutting Style **MODIFIED OCTAGONAL STEP CUT**
Measurements **12.50 X 6.31 X 4.04 MM**

GRADING RESULTS

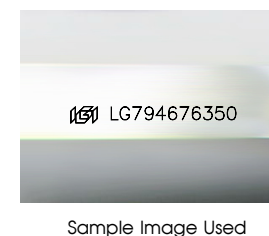
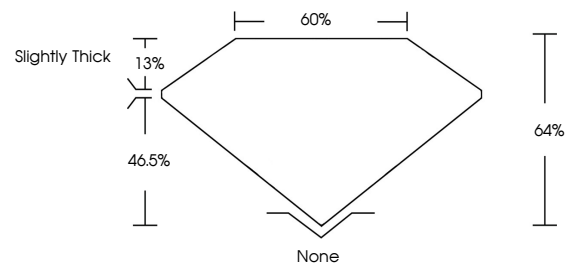
Carat Weight **2.08 CARATS**
Color Grade **G**
Clarity Grade **VVS 2**

ADDITIONAL GRADING INFORMATION

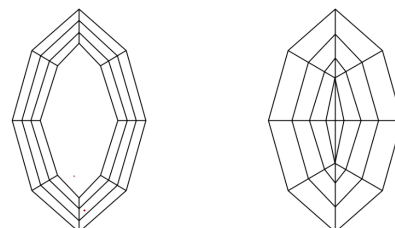
Polish **EXCELLENT**
Symmetry **EXCELLENT**
Fluorescence **NONE**
Inscription(s) **IGI LG794676350**

Comments: This Laboratory Grown Diamond was created by Chemical Vapor Deposition (CVD) growth process.
Type IIa

PROPORTIONS



CLARITY CHARACTERISTICS



KEY TO SYMBOLS

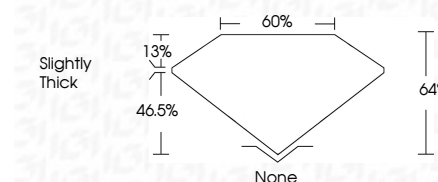
Red symbols indicate internal characteristics.
Green symbols indicate external characteristics.

COLOR

D E F G H I J Faint Very Light Light

CLARITY

FL	IF	VVS ¹⁻²	VS ¹⁻²	SI ¹⁻²	I ¹⁻³
Flawless	Internally Flawless	Very Very Slightly Included	Very Slightly Included	Slightly Included	Included



ADDITIONAL GRADING INFORMATION

Polish **EXCELLENT**
Symmetry **EXCELLENT**
Fluorescence **NONE**
Inscription(s) **IGI LG794676350**
Comments: This Laboratory Grown Diamond was created by Chemical Vapor Deposition (CVD) growth process.
Type IIa



May 2, 2026
IGI Report No **LG794676350**
MODIFIED OCTAGONAL STEP CUT
2.08 CARATS
Carat Weight **G**
Color Grade **VVS 2**
Clarity Grade **64%**
Depth **65%**
Table **Slightly Thick**
Girdle **None**
Culet **None**
Polish **EXCELLENT**
Symmetry **EXCELLENT**
Fluorescence **NONE**
Inscription(s) **IGI LG794676350**
Comments: This Laboratory Grown Diamond was created by Chemical Vapor Deposition (CVD) growth process.
Type IIa