



ELECTRONIC COPY

LG794675176
Report verification at igi.org



April 29, 2026

IGI Report Number **LG794675176**

Description **LABORATORY GROWN DIAMOND**

Shape and Cutting Style **CUT CORNERED
RECTANGULAR MODIFIED
BRILLIANT**

Measurements **11.97 X 8.00 X 5.55 MM**

GRADING RESULTS

Carat Weight **5.06 CARATS**

Color Grade **FANCY VIVID PINK**

Clarity Grade **VVS 2**

April 29, 2026

IGI Report Number **LG794675176**

Description **LABORATORY GROWN DIAMOND**

Shape and Cutting Style **CUT CORNERED RECTANGULAR
MODIFIED BRILLIANT**

Measurements **11.97 X 8.00 X 5.55 MM**

GRADING RESULTS

Carat Weight **5.06 CARATS**

Color Grade **FANCY VIVID PINK**

Clarity Grade **VVS 2**

ADDITIONAL GRADING INFORMATION

Polish **EXCELLENT**

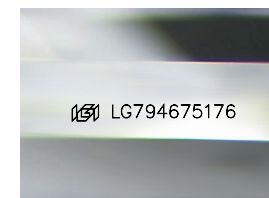
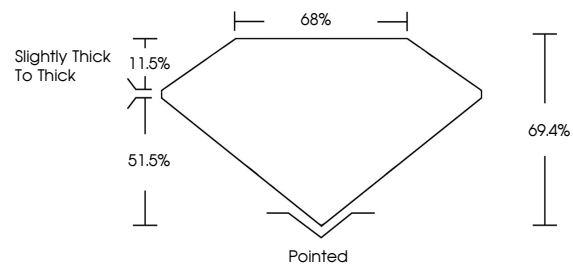
Symmetry **EXCELLENT**

Fluorescence **STRONG**

Inscription(s) **IGI LG794675176**

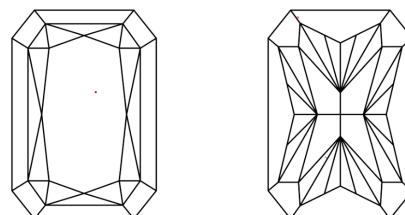
Comments: This Laboratory Grown Diamond was created by Chemical Vapor Deposition (CVD) growth process. Indications of post-growth treatment.

PROPORTIONS



Sample Image Used

CLARITY CHARACTERISTICS



KEY TO SYMBOLS

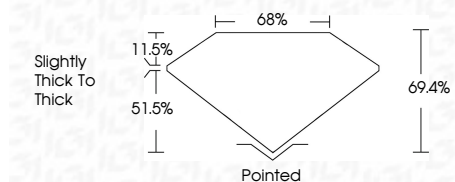
Red symbols indicate internal characteristics.
Green symbols indicate external characteristics.

COLOR

D E F G H I J Faint Very Light Light

CLARITY

FL	IF	VVS ¹⁻²	VS ¹⁻²	SI ¹⁻²	I ¹⁻³
Flawless	Internally Flawless	Very Very Slightly Included	Very Slightly Included	Slightly Included	Included



ADDITIONAL GRADING INFORMATION

Polish **EXCELLENT**

Symmetry **EXCELLENT**

Fluorescence **STRONG**

Inscription(s) **IGI LG794675176**

Comments: This Laboratory Grown Diamond was created by Chemical Vapor Deposition (CVD) growth process. Indications of post-growth treatment.



IGI



April 29, 2026
IGI Report No LG794675176
CUT CORNERED RECT. MODIFIED BRILLIANT
5.06 CARATS
FANCY VIVID PINK
VVS 2
69.4%
68%
Slightly thick to thick
Pointed
EXCELLENT
EXCELLENT
STRONG
IGI LG794675176
Comments: This Laboratory Grown Diamond was created by Chemical Vapor Deposition (CVD) growth process. Indications of post-growth treatment.