



ELECTRONIC COPY

LG794675175
Report verification at igi.org



April 29, 2026
IGI Report Number **LG794675175**
Description **LABORATORY GROWN DIAMOND**
Shape and Cutting Style **CUSHION MODIFIED BRILLIANT**
Measurements **12.57 X 8.57 X 5.60 MM**
GRADING RESULTS
Carat Weight **5.13 CARATS**
Color Grade **FANCY VIVID PINK**
Clarity Grade **VS 1**

April 29, 2026
IGI Report Number **LG794675175**
Description **LABORATORY GROWN DIAMOND**
Shape and Cutting Style **CUSHION MODIFIED BRILLIANT**
Measurements **12.57 X 8.57 X 5.60 MM**

GRADING RESULTS

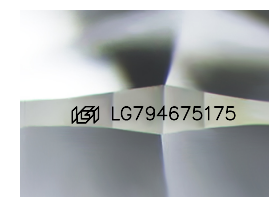
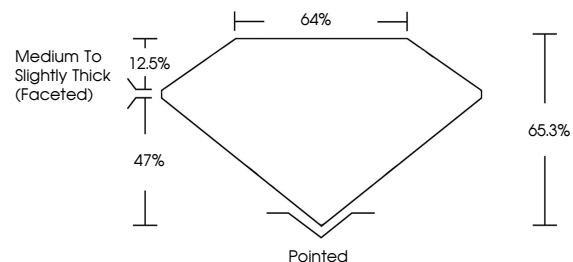
Carat Weight **5.13 CARATS**
Color Grade **FANCY VIVID PINK**
Clarity Grade **VS 1**

ADDITIONAL GRADING INFORMATION

Polish **EXCELLENT**
Symmetry **EXCELLENT**
Fluorescence **STRONG**
Inscription(s) **IGI LG794675175**

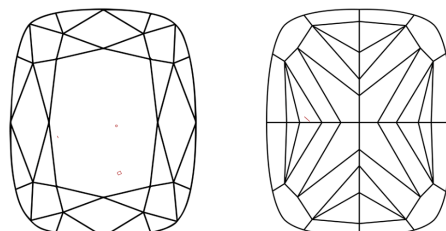
Comments: This Laboratory Grown Diamond was created by Chemical Vapor Deposition (CVD) growth process.
Indications of post-growth treatment.

PROPORTIONS



Sample Image Used

CLARITY CHARACTERISTICS



KEY TO SYMBOLS

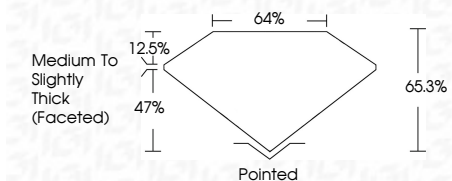
Red symbols indicate internal characteristics.
Green symbols indicate external characteristics.

COLOR

D E F G H I J Faint Very Light Light

CLARITY

FL	IF	VS ¹⁻²	VS ¹⁻²	SI ¹⁻²	I ¹⁻³
Flawless	Internally Flawless	Very Very Slightly Included	Very Slightly Included	Slightly Included	Included



ADDITIONAL GRADING INFORMATION

Polish **EXCELLENT**
Symmetry **EXCELLENT**
Fluorescence **STRONG**
Inscription(s) **IGI LG794675175**
Comments: This Laboratory Grown Diamond was created by Chemical Vapor Deposition (CVD) growth process.
Indications of post-growth treatment.



IGI



April 29, 2026
IGI Report No LG794675175
CUSHION MODIFIED BRILLIANT

12.57 X 8.57 X 5.60 MM
5.13 CARATS
FANCY VIVID PINK
VS 1
65.3%
47%
12.5%
64%
Pointed
EXCELLENT
EXCELLENT
STRONG
IGI LG794675175

Comments: This Laboratory Grown Diamond was created by Chemical Vapor Deposition (CVD) growth process.
Indications of post-growth treatment.