



May 25, 2026

**IGI Report Number** LG794667955  
**CUT CORNERED RECTANGULAR  
MODIFIED BRILLIANT  
LABORATORY GROWN DIAMOND**  
**5.95 X 4.07 X 2.67 MM**

**LABORATORY GROWN DIAMOND REPORT**

May 25, 2026  
IGI Report Number **LG794667955**  
Description **LABORATORY GROWN DIAMOND**  
Shape and Cutting Style **CUT CORNERED RECTANGULAR MODIFIED  
BRILLIANT**  
Measurements **5.95 X 4.07 X 2.67 MM**

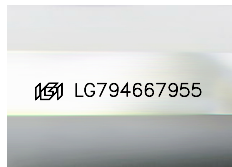
**GRADING RESULTS**

Carat Weight **0.57 CARAT**  
Color Grade **D**  
Clarity Grade **VVS 2**

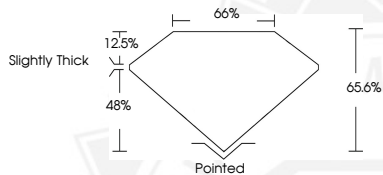
**ADDITIONAL GRADING INFORMATION**

Polish **VERY GOOD**  
Symmetry **VERY GOOD**  
Fluorescence **NONE**  
Inscription(s) **IGI LG794667955**

Comments: This Laboratory Grown Diamond was created by  
Chemical Vapor Deposition (CVD) growth process.  
Type IIa



Sample Image Used



**Carat Weight** 0.57 CARAT  
**Color Grade** D  
**Clarity Grade** VVS 2  
**Polish** VERY GOOD  
**Symmetry** VERY GOOD  
**Fluorescence** NONE  
**Inscription(s)** IGI LG794667955

Comments: This Laboratory Grown Diamond was created by  
Chemical Vapor Deposition (CVD)  
growth process. Type IIa



May 25, 2026

**IGI Report Number** LG794667955  
**CUT CORNERED RECTANGULAR  
MODIFIED BRILLIANT  
LABORATORY GROWN DIAMOND**  
**5.95 X 4.07 X 2.67 MM**

**Carat Weight** 0.57 CARAT  
**Color Grade** D  
**Clarity Grade** VVS 2  
**Polish** VERY GOOD  
**Symmetry** VERY GOOD  
**Fluorescence** NONE  
**Inscription(s)** IGI LG794667955

Comments: This Laboratory Grown Diamond was created by  
Chemical Vapor Deposition (CVD)  
growth process. Type IIa



THIS DOCUMENT WAS PRODUCED WITH THE FOLLOWING SECURITY MEASURES: SPECIAL DOCUMENT PAPER, INK SCREENS, WATERMARK, BACKGROUND DESIGNS, HOLOGRAM AND OTHER SECURITY FEATURES NOT LISTED AND DO EXCEED DOCUMENT SECURITY INDUSTRY GUIDELINES.