



May 22, 2026

IGI Report Number **LG794667793**

**CUT CORNERED SQUARE  
MODIFIED BRILLIANT  
LABORATORY GROWN DIAMOND  
4.99 X 4.95 X 3.20 MM**

Carat Weight **0.72 CARAT**  
Color Grade **E**  
Clarity Grade **VVS 2**  
Polish **VERY GOOD**  
Symmetry **VERY GOOD**  
Fluorescence **NONE**  
Inscription(s) **IGI LG794667793**

Comments: This Laboratory Grown Diamond was created by Chemical Vapor Deposition (CVD) growth process. Type IIa

**LABORATORY GROWN DIAMOND REPORT**

May 22, 2026

IGI Report Number

**LG794667793**

Description

**LABORATORY GROWN DIAMOND**

Shape and Cutting Style

**CUT CORNERED SQUARE MODIFIED  
BRILLIANT**

Measurements

**4.99 X 4.95 X 3.20 MM**

**GRADING RESULTS**

Carat Weight

**0.72 CARAT**

Color Grade

**E**

Clarity Grade

**VVS 2**

**ADDITIONAL GRADING INFORMATION**

Polish

**VERY GOOD**

Symmetry

**VERY GOOD**

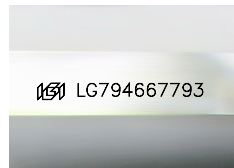
Fluorescence

**NONE**

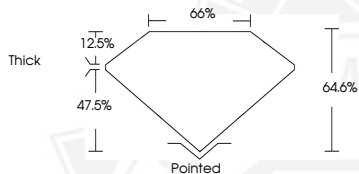
Inscription(s)

**IGI LG794667793**

Comments: This Laboratory Grown Diamond was created by Chemical Vapor Deposition (CVD) growth process. Type IIa



Sample Image Used



May 22, 2026

IGI Report Number **LG794667793**

**CUT CORNERED SQUARE MODIFIED  
BRILLIANT  
LABORATORY GROWN DIAMOND  
4.99 X 4.95 X 3.20 MM**

Carat Weight **0.72 CARAT**  
Color Grade **E**  
Clarity Grade **VVS 2**  
Polish **VERY GOOD**  
Symmetry **VERY GOOD**  
Fluorescence **NONE**  
Inscription(s) **IGI LG794667793**

Comments: This Laboratory Grown Diamond was created by Chemical Vapor Deposition (CVD) growth process. Type IIa



THIS DOCUMENT WAS PRODUCED WITH THE FOLLOWING SECURITY MEASURES: SPECIAL DOCUMENT PAPER, INK SCREENS, WATERMARK, BACKGROUND DESIGNS, HOLOGRAM AND OTHER SECURITY FEATURES NOT LISTED AND DO EXCEED DOCUMENT SECURITY INDUSTRY GUIDELINES.