



**INTERNATIONAL  
GEMOLOGICAL  
INSTITUTE**

**ELECTRONIC COPY**



May 22, 2026

**IGI Report Number LG794667792**  
**CUT CORNERED SQUARE**  
**MODIFIED BRILLIANT**  
**LABORATORY GROWN DIAMOND**  
**5.16 X 5.11 X 3.31 MM**

Carat Weight **0.77 CARAT**  
Color Grade **E**  
Clarity Grade **VS 1**  
Polish **VERY GOOD**  
Symmetry **VERY GOOD**  
Fluorescence **NONE**  
Inscription(s) **IGI LG794667792**

Comments: This Laboratory Grown Diamond was created by Chemical Vapor Deposition (CVD) growth process. Type IIa

**LABORATORY GROWN DIAMOND REPORT**

May 22, 2026

IGI Report Number

**LG794667792**

Description

**LABORATORY GROWN DIAMOND**

Shape and Cutting Style

**CUT CORNERED SQUARE MODIFIED  
BRILLIANT**

Measurements

**5.16 X 5.11 X 3.31 MM**

**GRADING RESULTS**

Carat Weight

**0.77 CARAT**

Color Grade

**E**

Clarity Grade

**VS 1**

**ADDITIONAL GRADING INFORMATION**

Polish

**VERY GOOD**

Symmetry

**VERY GOOD**

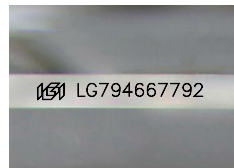
Fluorescence

**NONE**

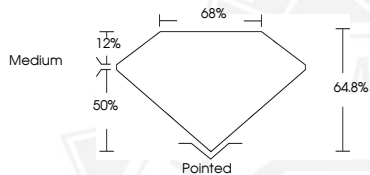
Inscription(s)

**IGI LG794667792**

Comments: This Laboratory Grown Diamond was created by Chemical Vapor Deposition (CVD) growth process.  
Type IIa



Sample Image Used



May 22, 2026

**IGI Report Number LG794667792**  
**CUT CORNERED SQUARE MODIFIED**  
**BRILLIANT**  
**LABORATORY GROWN DIAMOND**  
**5.16 X 5.11 X 3.31 MM**

Carat Weight **0.77 CARAT**  
Color Grade **E**  
Clarity Grade **VS 1**  
Polish **VERY GOOD**  
Symmetry **VERY GOOD**  
Fluorescence **NONE**  
Inscription(s) **IGI LG794667792**

Comments: This Laboratory Grown Diamond was created by Chemical Vapor Deposition (CVD) growth process. Type IIa



THIS DOCUMENT WAS PRODUCED WITH THE FOLLOWING SECURITY MEASURES: SPECIAL DOCUMENT PAPER, INK SCREENS, WATERMARK, BACKGROUND DESIGNS, HOLOGRAM AND OTHER SECURITY FEATURES NOT LISTED AND DO EXCEED DOCUMENT SECURITY INDUSTRY GUIDELINES.

For terms & conditions and to verify this report, please visit [www.igi.org](http://www.igi.org)