



ELECTRONIC COPY

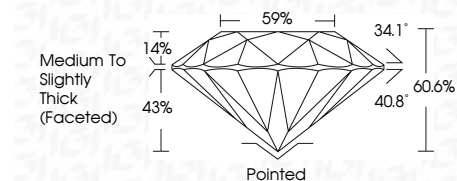
LG794662821 Report verification at igi.org



April 23, 2026 IGI Report Number LG794662821 Description LABORATORY GROWN DIAMOND Shape and Cutting Style ROUND BRILLIANT Measurements 7.73 - 7.77 X 4.69 MM

GRADING RESULTS

Carat Weight 1.73 CARAT Color Grade D Clarity Grade VVS 1 Cut Grade IDEAL



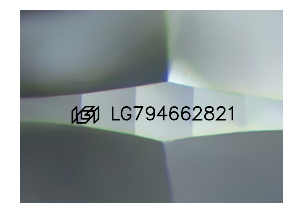
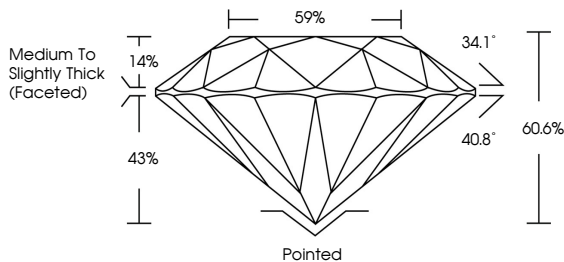
ADDITIONAL GRADING INFORMATION

Polish EXCELLENT Symmetry EXCELLENT Fluorescence NONE Inscription(s) LG794662821 Comments: As Grown - No indication of post-growth treatment. This Laboratory Grown Diamond was created by High Pressure High Temperature (HPHT) growth process. Type II



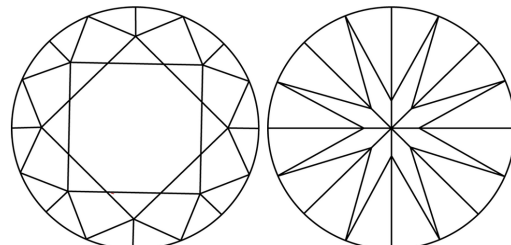
April 23, 2026 IGI Report No LG794662821 ROUND BRILLIANT 7.73 - 7.77 X 4.69 MM 1.73 CARAT D Color Grade VVS 1 IDEAL Clarity Grade VVS 1 IDEAL Depth 60.6% Table 59% Pavilion Height 43% Medium To Slightly Thick (Faceted) Cutler Pointed EXCELLENT Polish EXCELLENT Symmetry EXCELLENT Fluorescence NONE Inscription(s) LG794662821 Comments: As Grown - No indication of post-growth treatment. This Laboratory Grown Diamond was created by High Pressure High Temperature (HPHT) growth process. Type II

PROPORTIONS



Sample Image Used

CLARITY CHARACTERISTICS



KEY TO SYMBOLS

Red symbols indicate internal characteristics. Green symbols indicate external characteristics.

COLOR

Color scale: D, E, F, G, H, I, J, Faint, Very Light, Light

CLARITY

Clarity scale: FL, IF, VVS 1-2, VS 1-2, SI 1-2, I 1-3, Flawless, Internally Flawless, Very Very Slightly Included, Very Slightly Included, Slightly Included, Included

