



ELECTRONIC COPY

LG794660281
Report verification at igi.org



May 2, 2026

IGI Report Number **LG794660281**

Description **LABORATORY GROWN DIAMOND**

Shape and Cutting Style **HEXAGONAL MODIFIED
BRILLIANT**

Measurements **10.59 X 5.62 X 3.29 MM**

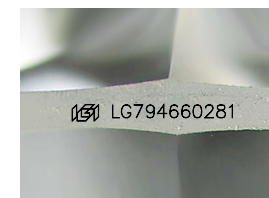
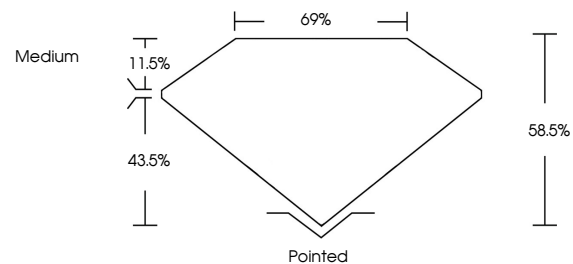
GRADING RESULTS

Carat Weight **1.28 CARAT**

Color Grade **D**

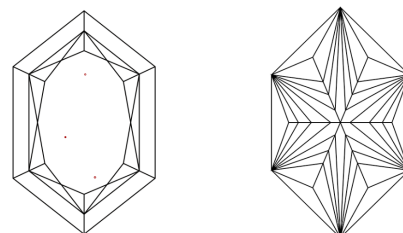
Clarity Grade **VVS 2**

PROPORTIONS



Sample Image Used

CLARITY CHARACTERISTICS



KEY TO SYMBOLS

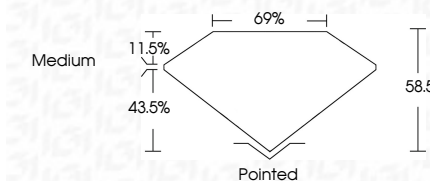
Red symbols indicate internal characteristics.
Green symbols indicate external characteristics.

COLOR

D E F G H I J Faint Very Light Light

CLARITY

FL	IF	VVS ¹⁻²	VS ¹⁻²	SI ¹⁻²	I ¹⁻³
Flawless	Internally Flawless	Very Very Slightly Included	Very Slightly Included	Slightly Included	Included



ADDITIONAL GRADING INFORMATION

Polish **EXCELLENT**

Symmetry **EXCELLENT**

Fluorescence **NONE**

Inscription(s) **IGI LG794660281**

Comments: This Laboratory Grown Diamond was created by Chemical Vapor Deposition (CVD) growth process. Type IIa



IGI



May 2, 2026
IGI Report No LG794660281
HEXAGONAL MODIFIED BRILLIANT
1.28 CARAT
D
10.59 X 5.62 X 3.29 MM
Color Grade
VVS 2
Depth 43.5%
Table 11.5%
Girdle 69%
Medium
Pointed
EXCELLENT
EXCELLENT
NONE
IGI LG794660281
Comments: This Laboratory Grown Diamond was created by Chemical Vapor Deposition (CVD) growth process. Type IIa