



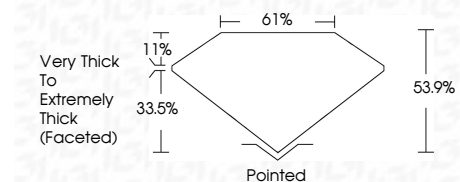
**ELECTRONIC COPY**

LG794658570  
Report verification at [igi.org](http://igi.org)



May 4, 2026  
IGI Report Number **LG794658570**  
Description **LABORATORY GROWN DIAMOND**  
Shape and Cutting Style **HEART MODIFIED BRILLIANT**  
Measurements **8.33 X 8.82 X 4.75 MM**

**GRADING RESULTS**  
Carat Weight **2.50 CARATS**  
Color Grade **FANCY VIVID GREEN**  
Clarity Grade **VS 1**



**ADDITIONAL GRADING INFORMATION**  
Polish **EXCELLENT**  
Symmetry **EXCELLENT**  
Fluorescence **VERY SLIGHT**  
Inscription(s) **IGI LG794658570**  
Comments: This Laboratory Grown Diamond was created by Chemical Vapor Deposition (CVD) growth process. Indications of post-growth treatment.

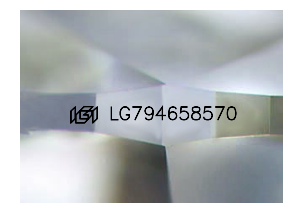
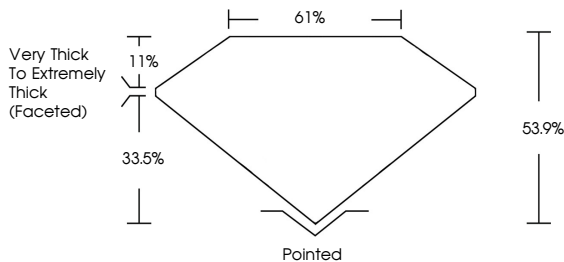


May 4, 2026  
IGI Report No **LG794658570**  
**HEART MODIFIED BRILLIANT**  
**8.33 X 8.82 X 4.75 MM**  
Carat Weight **2.50 CARATS**  
Color Grade **FANCY VIVID GREEN**  
Clarity Grade **VS 1**  
Depth **53.9%**  
Table **11%**  
Girdle **Very Thick to Extremely Thick (Faceted)**  
Culet **Pointed**  
Polish **EXCELLENT**  
Symmetry **EXCELLENT**  
Fluorescence **VERY SLIGHT**  
Inscription(s) **IGI LG794658570**  
Comments: This Laboratory Grown Diamond was created by Chemical Vapor Deposition (CVD) growth process. Indications of post-growth treatment.

May 4, 2026  
IGI Report Number **LG794658570**  
Description **LABORATORY GROWN DIAMOND**  
Shape and Cutting Style **HEART MODIFIED BRILLIANT**  
Measurements **8.33 X 8.82 X 4.75 MM**  
**GRADING RESULTS**  
Carat Weight **2.50 CARATS**  
Color Grade **FANCY VIVID GREEN**  
Clarity Grade **VS 1**  
**ADDITIONAL GRADING INFORMATION**  
Polish **EXCELLENT**  
Symmetry **EXCELLENT**  
Fluorescence **VERY SLIGHT**  
Inscription(s) **IGI LG794658570**

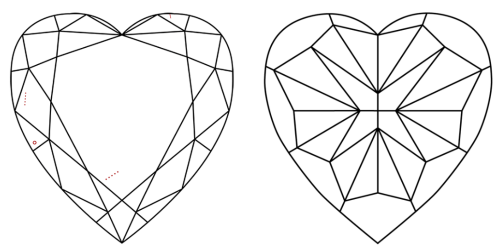
Comments: This Laboratory Grown Diamond was created by Chemical Vapor Deposition (CVD) growth process. Indications of post-growth treatment.

**PROPORTIONS**



Sample Image Used

**CLARITY CHARACTERISTICS**



**KEY TO SYMBOLS**  
Red symbols indicate internal characteristics.  
Green symbols indicate external characteristics.

**COLOR**

D	E	F	G	H	I	J	Faint	Very Light	Light
---	---	---	---	---	---	---	-------	------------	-------

**CLARITY**

FL	IF	VS <sup>1-2</sup>	VS <sup>1-2</sup>	SI <sup>1-2</sup>	I <sup>1-3</sup>
Flawless	Internally Flawless	Very Very Slightly Included	Very Slightly Included	Slightly Included	Included

