



LABORATORY GROWN DIAMOND REPORT

April 23, 2026
 IGI Report Number **LG794656159**
 Description **LABORATORY GROWN DIAMOND**
 Shape and Cutting Style **ROUND BRILLIANT**
 Measurements **6.28 - 6.32 X 3.96 MM**

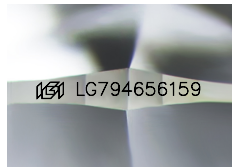
GRADING RESULTS

Carat Weight **0.97 CARAT**
 Color Grade **E**
 Clarity Grade **VS 1**
 Cut Grade **EXCELLENT**

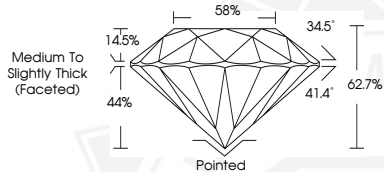
ADDITIONAL GRADING INFORMATION

Polish **EXCELLENT**
 Symmetry **EXCELLENT**
 Fluorescence **NONE**
 Inscription(s) **IGI LG794656159**

Comments: This Laboratory Grown Diamond was created by Chemical Vapor Deposition (CVD) growth process. Type IIa



Sample Image Used



April 23, 2026
 IGI Report Number **LG794656159**
ROUND BRILLIANT
LABORATORY GROWN DIAMOND
6.28 - 6.32 X 3.96 MM
 Carat Weight **0.97 CARAT**
 Color Grade **E**
 Clarity Grade **VS 1**
 Cut Grade **EXCELLENT**
 Polish **EXCELLENT**
 Symmetry **EXCELLENT**
 Fluorescence **NONE**
 Inscription(s) **IGI LG794656159**
 Comments: This Laboratory Grown Diamond was created by Chemical Vapor Deposition (CVD) growth process. Type IIa



April 23, 2026
 IGI Report Number **LG794656159**
ROUND BRILLIANT
LABORATORY GROWN DIAMOND
6.28 - 6.32 X 3.96 MM
 Carat Weight **0.97 CARAT**
 Color Grade **E**
 Clarity Grade **VS 1**
 Cut Grade **EXCELLENT**
 Polish **EXCELLENT**
 Symmetry **EXCELLENT**
 Fluorescence **NONE**
 Inscription(s) **IGI LG794656159**
 Comments: This Laboratory Grown Diamond was created by Chemical Vapor Deposition (CVD) growth process. Type IIa

THIS DOCUMENT WAS PRODUCED WITH THE FOLLOWING SECURITY MEASURES: SPECIAL DOCUMENT PAPER, INK SCREENS, WATERMARK, BACKGROUND DESIGNS, HOLOGRAM AND OTHER SECURITY FEATURES NOT LISTED AND DO EXCEED DOCUMENT SECURITY INDUSTRY GUIDELINES.

For terms & conditions and to verify this report, please visit www.igi.org