



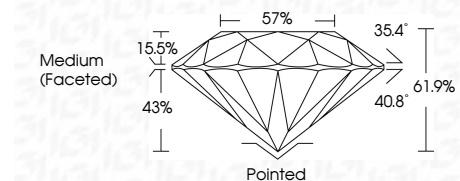
ELECTRONIC COPY

LG794655634 Report verification at igi.org



April 22, 2026 IGI Report Number LG794655634 Description LABORATORY GROWN DIAMOND Shape and Cutting Style ROUND BRILLIANT Measurements 6.49 - 6.50 X 4.02 MM

GRADING RESULTS Carat Weight 1.04 CARAT Color Grade D Clarity Grade VVS 1 Cut Grade IDEAL



ADDITIONAL GRADING INFORMATION Polish EXCELLENT Symmetry EXCELLENT Fluorescence NONE Inscription(s) IGI LG794655634 Comments: This Laboratory Grown Diamond was created by Chemical Vapor Deposition (CVD) growth process. Type IIa



April 22, 2026 IGI Report No LG794655634 ROUND BRILLIANT 6.49 - 6.50 X 4.02 MM 1.04 CARAT D VVS 1 IDEAL 61.9% 57% Medium (Faceted) Pointed EXCELLENT EXCELLENT NONE IGI LG794655634 Comments: This Laboratory Grown Diamond was created by Chemical Vapor Deposition (CVD) growth process. Type IIa

LABORATORY GROWN DIAMOND REPORT

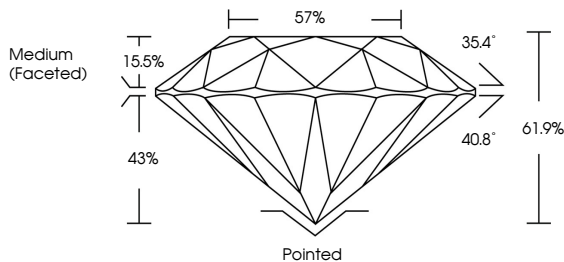
April 22, 2026 IGI Report Number LG794655634 Description LABORATORY GROWN DIAMOND Shape and Cutting Style ROUND BRILLIANT Measurements 6.49 - 6.50 X 4.02 MM

GRADING RESULTS Carat Weight 1.04 CARAT Color Grade D Clarity Grade VVS 1 Cut Grade IDEAL

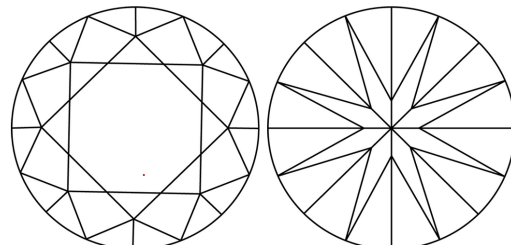
ADDITIONAL GRADING INFORMATION Polish EXCELLENT Symmetry EXCELLENT Fluorescence NONE Inscription(s) IGI LG794655634

Comments: This Laboratory Grown Diamond was created by Chemical Vapor Deposition (CVD) growth process. Type IIa

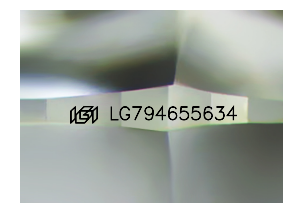
PROPORTIONS



CLARITY CHARACTERISTICS



KEY TO SYMBOLS Red symbols indicate internal characteristics. Green symbols indicate external characteristics.



Sample Image Used

Table with columns for Color grades: D, E, F, G, H, I, J, Faint, Very Light, Light

Table with columns for Clarity grades: FL, IF, VVS 1-2, VS 1-2, SI 1-2, I 1-3

