



**ELECTRONIC COPY**

LG794654347  
Report verification at igi.org



May 4, 2026

IGI Report Number **LG794654347**

Description **LABORATORY GROWN DIAMOND**

Shape and Cutting Style **ROUND BRILLIANT**

Measurements **11.80 - 11.86 X 6.96 MM**

**GRADING RESULTS**

Carat Weight **6.03 CARATS**

Color Grade **E**

Clarity Grade **VVS 2**

Cut Grade **EXCELLENT**

May 4, 2026

IGI Report Number **LG794654347**

Description **LABORATORY GROWN DIAMOND**

Shape and Cutting Style **ROUND BRILLIANT**

Measurements **11.80 - 11.86 X 6.96 MM**

**GRADING RESULTS**

Carat Weight **6.03 CARATS**

Color Grade **E**

Clarity Grade **VVS 2**

Cut Grade **EXCELLENT**

**ADDITIONAL GRADING INFORMATION**

Polish **EXCELLENT**

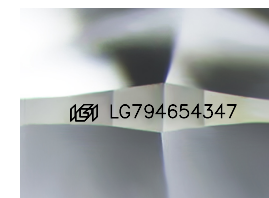
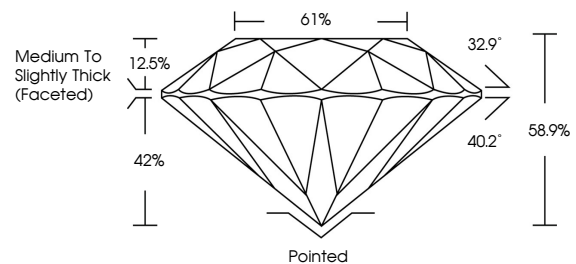
Symmetry **EXCELLENT**

Fluorescence **NONE**

Inscription(s) **IGI LG794654347**

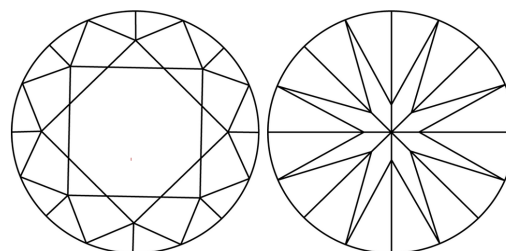
Comments: This Laboratory Grown Diamond was created by Chemical Vapor Deposition (CVD) growth process. Type IIa

**PROPORTIONS**



Sample Image Used

**CLARITY CHARACTERISTICS**



**KEY TO SYMBOLS**

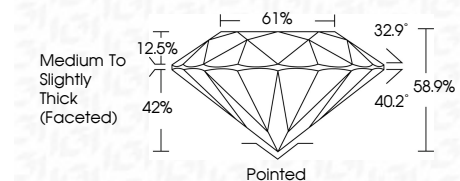
Red symbols indicate internal characteristics.  
Green symbols indicate external characteristics.

**COLOR**

D E F G H I J Faint Very Light Light

**CLARITY**

| FL       | IF                  | VVS <sup>1-2</sup>          | VS <sup>1-2</sup>      | SI <sup>1-2</sup> | I <sup>1-3</sup> |
|----------|---------------------|-----------------------------|------------------------|-------------------|------------------|
| Flawless | Internally Flawless | Very Very Slightly Included | Very Slightly Included | Slightly Included | Included         |



**ADDITIONAL GRADING INFORMATION**

Polish **EXCELLENT**

Symmetry **EXCELLENT**

Fluorescence **NONE**

Inscription(s) **IGI LG794654347**

Comments: This Laboratory Grown Diamond was created by Chemical Vapor Deposition (CVD) growth process. Type IIa



**IGI**



|                 |                           |              |             |               |           |       |       |        |                                    |         |           |           |              |                 |
|-----------------|---------------------------|--------------|-------------|---------------|-----------|-------|-------|--------|------------------------------------|---------|-----------|-----------|--------------|-----------------|
| May 4, 2026     | IGI Report No LG794654347 | 6.03 CARATS  | E           | VVS 2         | EXCELLENT | 61%   | 32.9° | 40.2°  | 58.9%                              | Pointed | EXCELLENT | EXCELLENT | NONE         | IGI LG794654347 |
| ROUND BRILLIANT | 11.80 - 11.86 X 6.96 MM   | Carat Weight | Color Grade | Clarity Grade | Cut Grade | Depth | Table | Girdle | Medium To Slightly Thick (Faceted) | Culet   | Polish    | Symmetry  | Fluorescence | Inscription(s)  |

Comments: This Laboratory Grown Diamond was created by Chemical Vapor Deposition (CVD) growth process. Type IIa