



**ELECTRONIC COPY**

LG794653888  
Report verification at igi.org



April 28, 2026  
IGI Report Number **LG794653888**  
Description **LABORATORY GROWN DIAMOND**

Shape and Cutting Style **PEAR MODIFIED BRILLIANT**  
Measurements **8.39 X 5.45 X 3.26 MM**

**GRADING RESULTS**  
Carat Weight **1.05 CARAT**  
Color Grade **FANCY INTENSE YELLOW**  
Clarity Grade **VS 1**

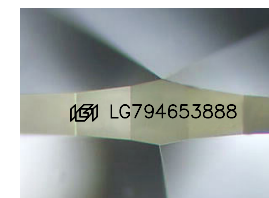
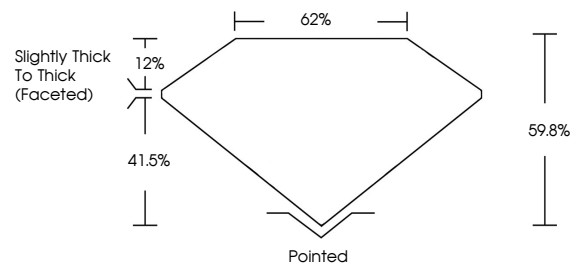
April 28, 2026  
IGI Report Number **LG794653888**  
Description **LABORATORY GROWN DIAMOND**  
Shape and Cutting Style **PEAR MODIFIED BRILLIANT**  
Measurements **8.39 X 5.45 X 3.26 MM**

**GRADING RESULTS**  
Carat Weight **1.05 CARAT**  
Color Grade **FANCY INTENSE YELLOW**  
Clarity Grade **VS 1**

**ADDITIONAL GRADING INFORMATION**  
Polish **EXCELLENT**  
Symmetry **EXCELLENT**  
Fluorescence **NONE**  
Inscription(s) **IGI LG794653888**

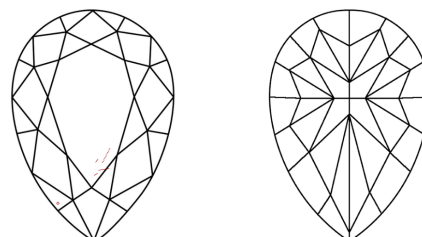
Comments: This Laboratory Grown Diamond was created by Chemical Vapor Deposition (CVD) growth process.

**PROPORTIONS**



Sample Image Used

**CLARITY CHARACTERISTICS**



**KEY TO SYMBOLS**

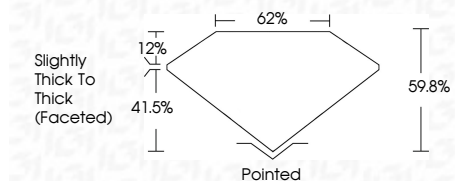
Red symbols indicate internal characteristics.  
Green symbols indicate external characteristics.

**COLOR**

D E F G H I J Faint Very Light Light

**CLARITY**

FL	IF	VS <sup>1-2</sup>	VS <sup>1-2</sup>	SI <sup>1-2</sup>	I <sup>1-3</sup>
Flawless	Internally Flawless	Very Very Slightly Included	Very Slightly Included	Slightly Included	Included



**ADDITIONAL GRADING INFORMATION**

Polish **EXCELLENT**  
Symmetry **EXCELLENT**  
Fluorescence **NONE**  
Inscription(s) **IGI LG794653888**  
Comments: This Laboratory Grown Diamond was created by Chemical Vapor Deposition (CVD) growth process.



April 28, 2026  
IGI Report No **LG794653888**  
**PEAR MODIFIED BRILLIANT**  
Carat Weight **1.05 CARAT**  
Color Grade **FANCY INTENSE YELLOW**  
Clarity Grade **VS 1**  
Depth **61.6%**  
Table **62%**  
Girdle **Slightly Thick To Thick (Faceted)**  
Culet **Pointed**  
Polish **EXCELLENT**  
Symmetry **EXCELLENT**  
Fluorescence **NONE**  
Inscription(s) **IGI LG794653888**  
Comments: This Laboratory Grown Diamond was created by Chemical Vapor Deposition (CVD) growth process.