



ELECTRONIC COPY

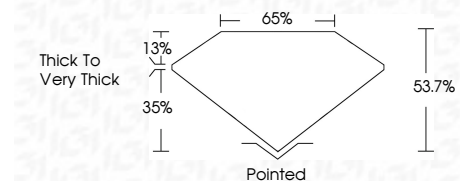
LG794653869
Report verification at igi.org



April 28, 2026
IGI Report Number **LG794653869**
Description **LABORATORY GROWN DIAMOND**
Shape and Cutting Style **OVAL MODIFIED BRILLIANT**
Measurements **12.08 X 8.46 X 4.54 MM**

GRADING RESULTS

Carat Weight **3.16 CARATS**
Color Grade **FANCY VIVID PINK**
Clarity Grade **VVS 2**



ADDITIONAL GRADING INFORMATION

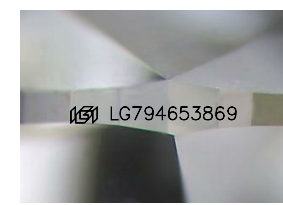
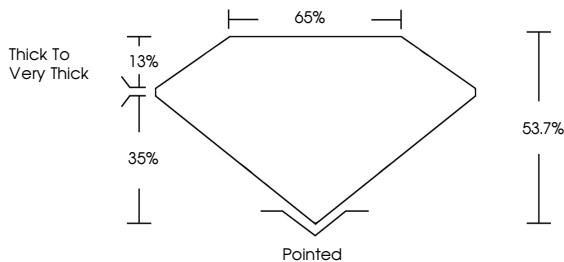
Polish **EXCELLENT**
Symmetry **EXCELLENT**
Fluorescence **SLIGHT**
Inscription(s) **IGI LG794653869**
Comments: This Laboratory Grown Diamond was created by Chemical Vapor Deposition (CVD) growth process. Indications of post-growth treatment.



April 28, 2026
IGI Report No LG794653869
OVAL MODIFIED BRILLIANT
12.08 X 8.46 X 4.54 MM
3.16 CARATS
FANCY VIVID PINK
VVS 2
53.7%
65%
Thick to Very Thick
Pointed
EXCELLENT
EXCELLENT
SLIGHT
IGI LG794653869
Comments: This Laboratory Grown Diamond was created by Chemical Vapor Deposition (CVD) growth process. Indications of post-growth treatment.

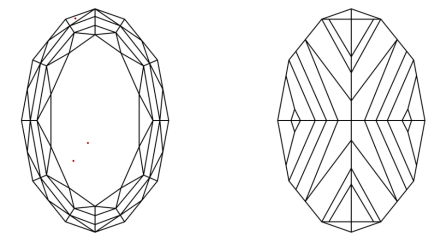
April 28, 2026
IGI Report Number **LG794653869**
Description **LABORATORY GROWN DIAMOND**
Shape and Cutting Style **OVAL MODIFIED BRILLIANT**
Measurements **12.08 X 8.46 X 4.54 MM**
GRADING RESULTS
Carat Weight **3.16 CARATS**
Color Grade **FANCY VIVID PINK**
Clarity Grade **VVS 2**
ADDITIONAL GRADING INFORMATION
Polish **EXCELLENT**
Symmetry **EXCELLENT**
Fluorescence **SLIGHT**
Inscription(s) **IGI LG794653869**
Comments: This Laboratory Grown Diamond was created by Chemical Vapor Deposition (CVD) growth process. Indications of post-growth treatment.

PROPORTIONS



Sample Image Used

CLARITY CHARACTERISTICS



KEY TO SYMBOLS

Red symbols indicate internal characteristics.
Green symbols indicate external characteristics.

COLOR

D	E	F	G	H	I	J	Faint	Very Light	Light
---	---	---	---	---	---	---	-------	------------	-------

CLARITY

FL	IF	VVS ¹⁻²	VS ¹⁻²	SI ¹⁻²	I ¹⁻³
Flawless	Internally Flawless	Very Very Slightly Included	Very Slightly Included	Slightly Included	Included

