



**ELECTRONIC COPY**

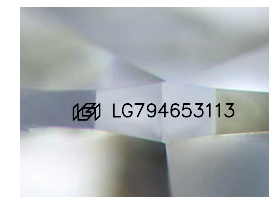
LG794653113  
Report verification at igi.org



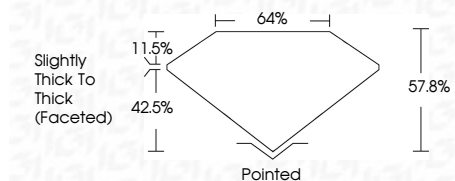
April 23, 2026  
IGI Report Number **LG794653113**  
Description **LABORATORY GROWN DIAMOND**  
Shape and Cutting Style **HEART BRILLIANT**  
Measurements **6.14 X 7.02 X 4.06 MM**

**GRADING RESULTS**

Carat Weight **1.04 CARAT**  
Color Grade **D**  
Clarity Grade **VS 1**



Sample Image Used



**ADDITIONAL GRADING INFORMATION**

Polish **EXCELLENT**  
Symmetry **EXCELLENT**  
Fluorescence **NONE**  
Inscription(s) **IGI LG794653113**  
Comments: This Laboratory Grown Diamond was created by Chemical Vapor Deposition (CVD) growth process. Type IIa



April 23, 2026  
IGI Report No LG794653113  
**HEART BRILLIANT**  
6.14 X 7.02 X 4.06 MM  
1.04 CARAT  
D  
VS 1  
57.8%  
42.5%  
11.5%  
Slightly Thick To Thick (Faceted)  
Pointed  
EXCELLENT  
EXCELLENT  
NONE  
IGI LG794653113  
Comments: This Laboratory Grown Diamond was created by Chemical Vapor Deposition (CVD) growth process. Type IIa

**LABORATORY GROWN DIAMOND REPORT**

April 23, 2026  
IGI Report Number **LG794653113**  
Description **LABORATORY GROWN DIAMOND**  
Shape and Cutting Style **HEART BRILLIANT**  
Measurements **6.14 X 7.02 X 4.06 MM**

**GRADING RESULTS**

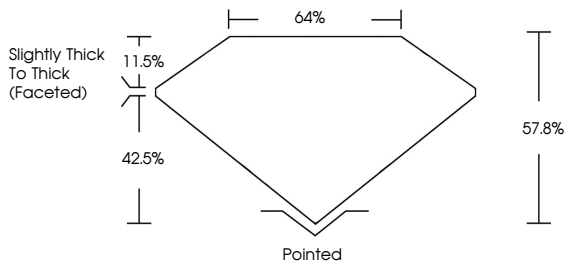
Carat Weight **1.04 CARAT**  
Color Grade **D**  
Clarity Grade **VS 1**

**ADDITIONAL GRADING INFORMATION**

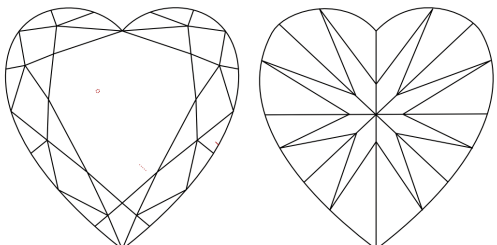
Polish **EXCELLENT**  
Symmetry **EXCELLENT**  
Fluorescence **NONE**  
Inscription(s) **IGI LG794653113**

Comments: This Laboratory Grown Diamond was created by Chemical Vapor Deposition (CVD) growth process. Type IIa

**PROPORTIONS**



**CLARITY CHARACTERISTICS**



**KEY TO SYMBOLS**

Red symbols indicate internal characteristics.  
Green symbols indicate external characteristics.

**COLOR**

D E F G H I J Faint Very Light Light

**CLARITY**

FL IF VS<sup>1-2</sup> VS<sup>1-2</sup> SI<sup>1-2</sup> I<sup>1-3</sup>  
Flawless Internally Flawless Very Very Slightly Included Very Slightly Included Slightly Included Included

