



**ELECTRONIC COPY**

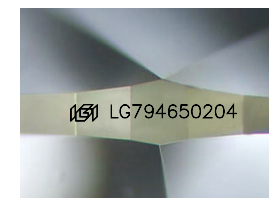
LG794650204  
Report verification at igi.org



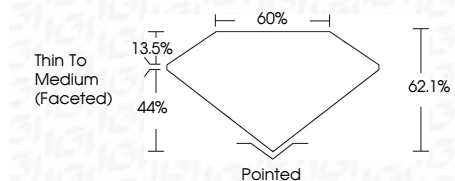
April 25, 2026  
IGI Report Number **LG794650204**  
Description **LABORATORY GROWN DIAMOND**  
Shape and Cutting Style **MARQUISE BRILLIANT**  
Measurements **12.37 X 6.02 X 3.74 MM**

**GRADING RESULTS**

Carat Weight **1.55 CARAT**  
Color Grade **E**  
Clarity Grade **VS 1**



Sample Image Used



**ADDITIONAL GRADING INFORMATION**

Polish **EXCELLENT**  
Symmetry **EXCELLENT**  
Fluorescence **NONE**  
Inscription(s) **IGI LG794650204**  
Comments: This Laboratory Grown Diamond was created by Chemical Vapor Deposition (CVD) growth process. Type IIa



April 25, 2026  
IGI Report No **LG794650204**  
**MARQUISE BRILLIANT**  
12.37 X 6.02 X 3.74 MM  
1.55 CARAT  
E  
VS 1  
62.1%  
44%  
Thin To Medium (Faceted)  
Pointed  
EXCELLENT  
EXCELLENT  
NONE  
IGI LG794650204  
Comments: This Laboratory Grown Diamond was created by Chemical Vapor Deposition (CVD) growth process. Type IIa

**LABORATORY GROWN DIAMOND REPORT**

April 25, 2026  
IGI Report Number **LG794650204**  
Description **LABORATORY GROWN DIAMOND**  
Shape and Cutting Style **MARQUISE BRILLIANT**  
Measurements **12.37 X 6.02 X 3.74 MM**

**GRADING RESULTS**

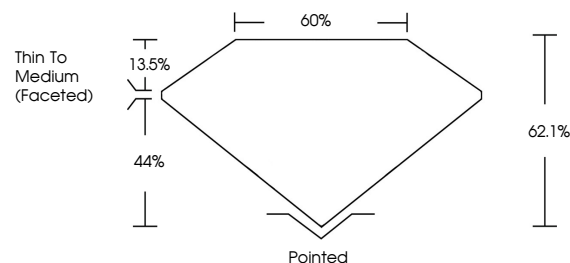
Carat Weight **1.55 CARAT**  
Color Grade **E**  
Clarity Grade **VS 1**

**ADDITIONAL GRADING INFORMATION**

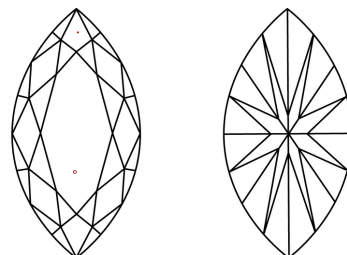
Polish **EXCELLENT**  
Symmetry **EXCELLENT**  
Fluorescence **NONE**  
Inscription(s) **IGI LG794650204**

Comments: This Laboratory Grown Diamond was created by Chemical Vapor Deposition (CVD) growth process. Type IIa

**PROPORTIONS**



**CLARITY CHARACTERISTICS**



**KEY TO SYMBOLS**

Red symbols indicate internal characteristics.  
Green symbols indicate external characteristics.

**COLOR**

D E F G H I J Faint Very Light Light

**CLARITY**

FL	IF	VS <sup>1-2</sup>	VS <sup>1-2</sup>	SI <sup>1-2</sup>	I <sup>1-3</sup>
Flawless	Internally Flawless	Very Very Slightly Included	Very Slightly Included	Slightly Included	Included

