



ELECTRONIC COPY

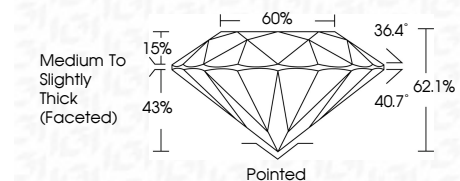
LG794649159
Report verification at igi.org



April 24, 2026
IGI Report Number LG794649159
Description LABORATORY GROWN DIAMOND
Shape and Cutting Style ROUND BRILLIANT
Measurements 6.55 - 6.57 X 4.07 MM

GRADING RESULTS

Carat Weight 1.10 CARAT
Color Grade E
Clarity Grade VS 1
Cut Grade EXCELLENT

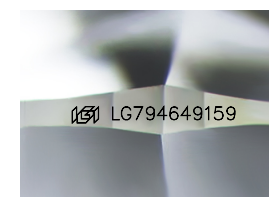


ADDITIONAL GRADING INFORMATION

Polish EXCELLENT
Symmetry EXCELLENT
Fluorescence NONE
Inscription(s) IGI LG794649159
Comments: This Laboratory Grown Diamond was created by Chemical Vapor Deposition (CVD) growth process. Type IIa

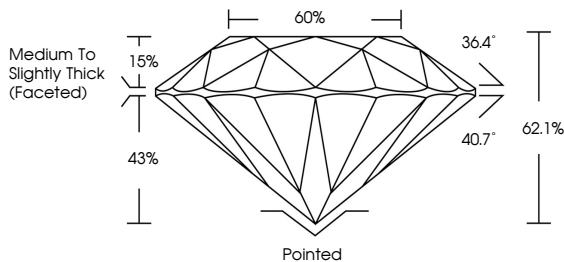


April 24, 2026
IGI Report No LG794649159
ROUND BRILLIANT
6.55 - 6.57 X 4.07 MM
1.10 CARAT E
Color Grade EXCELLENT
Clarity Grade VS 1
Depth 62.1%
Table 60%
Medium To Slightly Thick (Faceted)
Cutler Pointed EXCELLENT
Polish EXCELLENT
Symmetry EXCELLENT
Fluorescence NONE
Inscription(s) IGI LG794649159
Comments: This Laboratory Grown Diamond was created by Chemical Vapor Deposition (CVD) growth process. Type IIa

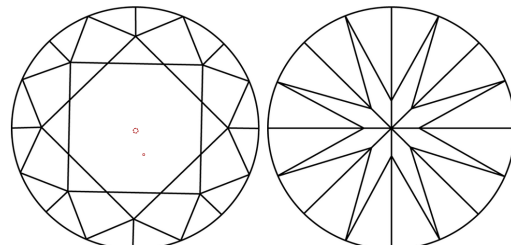


Sample Image Used

PROPORTIONS



CLARITY CHARACTERISTICS



KEY TO SYMBOLS

Red symbols indicate internal characteristics.
Green symbols indicate external characteristics.

COLOR

Table with color grades: D, E, F, G, H, I, J, Faint, Very Light, Light

CLARITY

Table with clarity grades: FL, IF, VS 1-2, VS 1-2, SI 1-2, I 1-3, Flawless, Internally Flawless, Very Very Slightly Included, Very Slightly Included, Slightly Included, Included

