



ELECTRONIC COPY

LG794648598
Report verification at igi.org



April 24, 2026

IGI Report Number **LG794648598**

Description **LABORATORY GROWN DIAMOND**

Shape and Cutting Style **ROUND BRILLIANT**

Measurements **6.48 - 6.51 X 4.08 MM**

GRADING RESULTS

Carat Weight **1.07 CARAT**

Color Grade **E**

Clarity Grade **VS 2**

Cut Grade **EXCELLENT**

April 24, 2026

IGI Report Number **LG794648598**

Description **LABORATORY GROWN DIAMOND**

Shape and Cutting Style **ROUND BRILLIANT**

Measurements **6.48 - 6.51 X 4.08 MM**

GRADING RESULTS

Carat Weight **1.07 CARAT**

Color Grade **E**

Clarity Grade **VS 2**

Cut Grade **EXCELLENT**

ADDITIONAL GRADING INFORMATION

Polish **EXCELLENT**

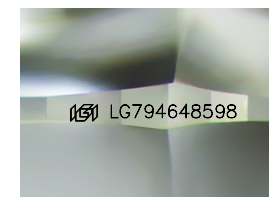
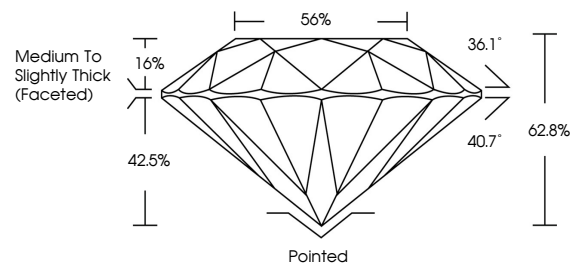
Symmetry **EXCELLENT**

Fluorescence **NONE**

Inscription(s) **LG794648598**

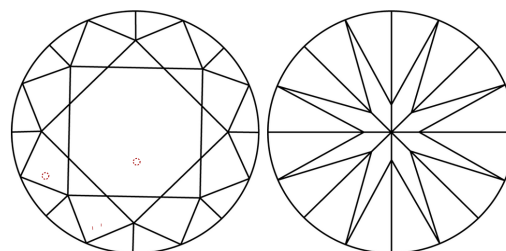
Comments: This Laboratory Grown Diamond was created by Chemical Vapor Deposition (CVD) growth process.
Type IIa

PROPORTIONS



Sample Image Used

CLARITY CHARACTERISTICS



KEY TO SYMBOLS

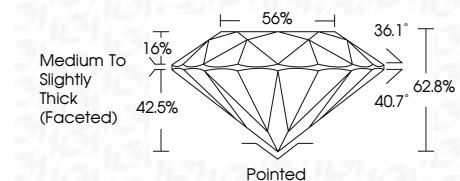
Red symbols indicate internal characteristics.
Green symbols indicate external characteristics.

COLOR

D E F G H I J Faint Very Light Light

CLARITY

FL	IF	VS ¹⁻²	VS ¹⁻²	SI ¹⁻²	I ¹⁻³
Flawless	Internally Flawless	Very Very Slightly Included	Very Slightly Included	Slightly Included	Included



ADDITIONAL GRADING INFORMATION

Polish **EXCELLENT**

Symmetry **EXCELLENT**

Fluorescence **NONE**

Inscription(s) **LG794648598**

Comments: This Laboratory Grown Diamond was created by Chemical Vapor Deposition (CVD) growth process.
Type IIa



April 24, 2026
IGI Report No LG794648598
ROUND BRILLIANT
6.48 - 6.51 X 4.08 MM
Carat Weight 1.07 CARAT
Color Grade E
Clarity Grade VS 2
Depth 62.5%
Table 56%
Medium To Slightly Thick (Faceted)
Culet Pointed
Polish EXCELLENT
Symmetry EXCELLENT
Fluorescence NONE
Inscription(s) IGI LG794648598
Comments: This Laboratory Grown Diamond was created by Chemical Vapor Deposition (CVD) growth process.
Type IIa