



ELECTRONIC COPY

LG794645530
Report verification at igi.org



April 23, 2026

IGI Report Number **LG794645530**

Description **LABORATORY GROWN DIAMOND**

Shape and Cutting Style **EMERALD CUT**

Measurements **15.76 X 10.83 X 7.35 MM**

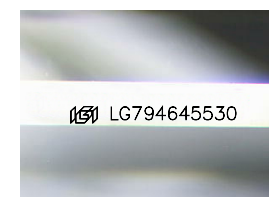
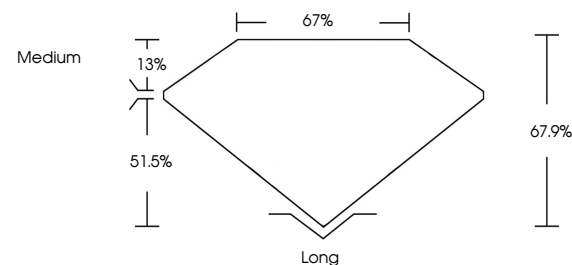
GRADING RESULTS

Carat Weight **12.27 CARATS**

Color Grade **F**

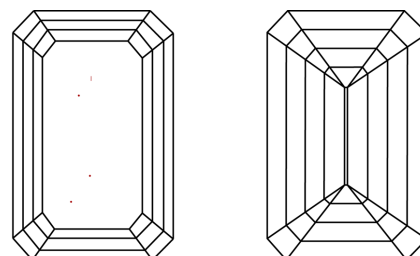
Clarity Grade **VVS 2**

PROPORTIONS



Sample Image Used

CLARITY CHARACTERISTICS



KEY TO SYMBOLS

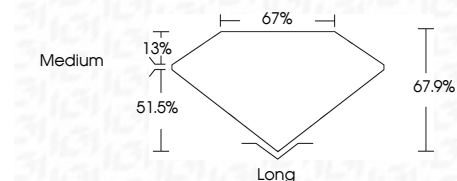
Red symbols indicate internal characteristics.
Green symbols indicate external characteristics.

COLOR

D E F G H I J Faint Very Light Light

CLARITY

FL	IF	VVS ¹⁻²	VS ¹⁻²	SI ¹⁻²	I ¹⁻³
Flawless	Internally Flawless	Very Very Slightly Included	Very Slightly Included	Slightly Included	Included



ADDITIONAL GRADING INFORMATION

Polish **EXCELLENT**

Symmetry **EXCELLENT**

Fluorescence **NONE**

Inscription(s) **IGI LG794645530**

Comments: This Laboratory Grown Diamond was created by Chemical Vapor Deposition (CVD) growth process. Type IIa



IGI



April 23, 2026
IGI Report No LG794645530
EMERALD CUT

15.76 X 10.83 X 7.35 MM

12.27 CARATS
F

Carat Weight
Color Grade
Clarity Grade
Depth
Table
Girdle
Medium

VVS 2
67.9%
67%

Long
EXCELLENT
EXCELLENT
NONE
IGI LG794645530

Culet
Polish
Symmetry
Fluorescence
Inscription(s)

Comments: This Laboratory Grown Diamond was created by Chemical Vapor Deposition (CVD) growth process. Type IIa