



ELECTRONIC COPY

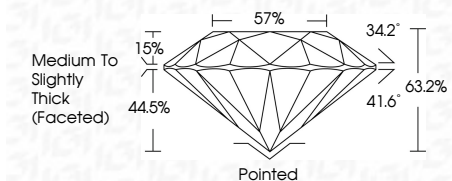
LG794644437
Report verification at igi.org



April 22, 2026
IGI Report Number **LG794644437**
Description **LABORATORY GROWN DIAMOND**
Shape and Cutting Style **ROUND BRILLIANT**
Measurements **6.56 - 6.59 X 4.16 MM**

GRADING RESULTS

Carat Weight **1.10 CARAT**
Color Grade **E**
Clarity Grade **VVS 2**
Cut Grade **EXCELLENT**

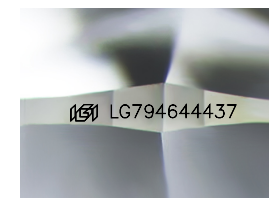


ADDITIONAL GRADING INFORMATION

Polish **EXCELLENT**
Symmetry **EXCELLENT**
Fluorescence **NONE**
Inscription(s) **IGI LG794644437**
Comments: This Laboratory Grown Diamond was created by Chemical Vapor Deposition (CVD) growth process. Type IIa

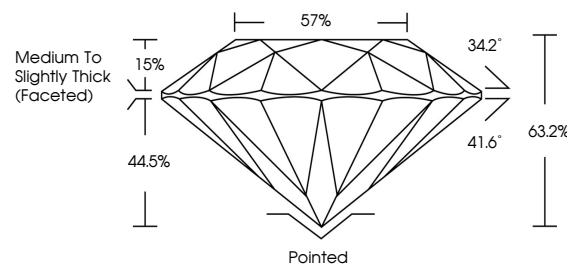


April 22, 2026
IGI Report No LG794644437
ROUND BRILLIANT
6.56 - 6.59 X 4.16 MM
1.10 CARAT
E
Color Grade
EXCELLENT
VVS 2
Clarity Grade
63.2%
44.5%
Depth
57%
Diameter
Crown
34.2°
Pavilion
41.6°
Pointed
Medium To Slightly Thick (Faceted)
EXCELLENT
EXCELLENT
NONE
Symmetry
Fluorescence
Inscription(s)
IGI LG794644437
Comments: This Laboratory Grown Diamond was created by Chemical Vapor Deposition (CVD) growth process. Type IIa

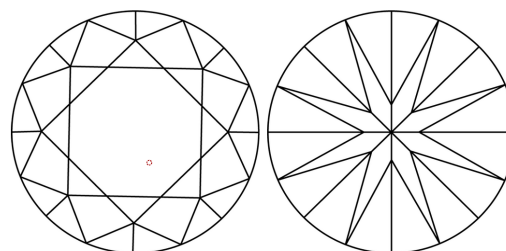


Sample Image Used

PROPORTIONS



CLARITY CHARACTERISTICS



KEY TO SYMBOLS

Red symbols indicate internal characteristics.
Green symbols indicate external characteristics.

COLOR

D E F G H I J Faint Very Light Light

CLARITY

FL	IF	VVS ¹⁻²	VS ¹⁻²	SI ¹⁻²	I ¹⁻³
Flawless	Internally Flawless	Very Very Slightly Included	Very Slightly Included	Slightly Included	Included

