



ELECTRONIC COPY

LG794641498
Report verification at igi.org



April 23, 2026
IGI Report Number **LG794641498**
Description **LABORATORY GROWN DIAMOND**
Shape and Cutting Style **CUSHION MODIFIED BRILLIANT**
Measurements **8.87 X 6.83 X 4.65 MM**
GRADING RESULTS
Carat Weight **2.56 CARATS**
Color Grade **FANCY INTENSE YELLOW**
Clarity Grade **VS 1**

April 23, 2026
IGI Report Number **LG794641498**
Description **LABORATORY GROWN DIAMOND**
Shape and Cutting Style **CUSHION MODIFIED BRILLIANT**
Measurements **8.87 X 6.83 X 4.65 MM**

GRADING RESULTS

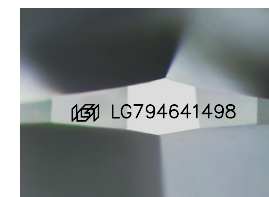
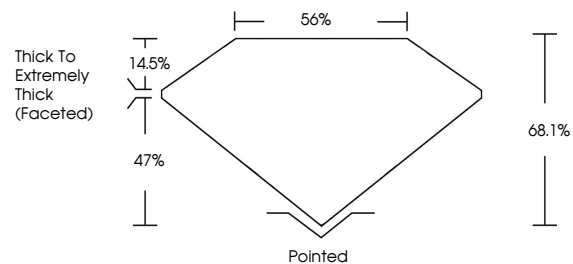
Carat Weight **2.56 CARATS**
Color Grade **FANCY INTENSE YELLOW**
Clarity Grade **VS 1**

ADDITIONAL GRADING INFORMATION

Polish **EXCELLENT**
Symmetry **EXCELLENT**
Fluorescence **NONE**
Inscription(s) **IGI LG794641498**

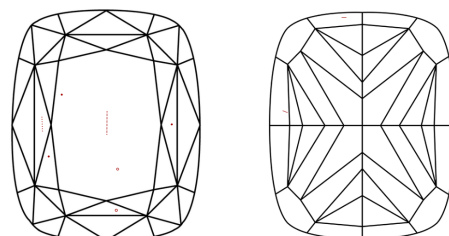
Comments: This Laboratory Grown Diamond was created by Chemical Vapor Deposition (CVD) growth process.

PROPORTIONS



Sample Image Used

CLARITY CHARACTERISTICS



KEY TO SYMBOLS

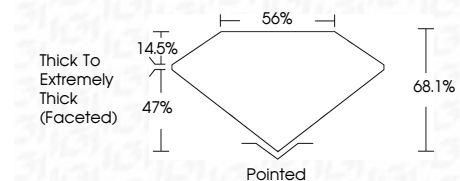
Red symbols indicate internal characteristics.
Green symbols indicate external characteristics.

COLOR

D E F G H I J Faint Very Light Light

CLARITY

FL	IF	VS ¹⁻²	VS ¹⁻²	SI ¹⁻²	I ¹⁻³
Flawless	Internally Flawless	Very Very Slightly Included	Very Slightly Included	Slightly Included	Included



ADDITIONAL GRADING INFORMATION

Polish **EXCELLENT**
Symmetry **EXCELLENT**
Fluorescence **NONE**
Inscription(s) **IGI LG794641498**
Comments: This Laboratory Grown Diamond was created by Chemical Vapor Deposition (CVD) growth process.



April 23, 2026
IGI Report No LG794641498
CUSHION MODIFIED BRILLIANT
8.87 X 6.83 X 4.65 MM
2.56 CARATS
FANCY INTENSE YELLOW
VS 1
68.1%
56%
Thick To Extremely Thick (Faceted)
Pointed
EXCELLENT
EXCELLENT
NONE
IGI LG794641498
Comments: This Laboratory Grown Diamond was created by Chemical Vapor Deposition (CVD) growth process.