



**ELECTRONIC COPY**

LG794641484  
Report verification at igi.org



April 23, 2026

IGI Report Number **LG794641484**

Description **LABORATORY GROWN DIAMOND**

Shape and Cutting Style **CUT CORNERED  
RECTANGULAR MODIFIED  
BRILLIANT**

Measurements **11.32 X 7.51 X 5.18 MM**

**GRADING RESULTS**

Carat Weight **4.11 CARATS**

Color Grade **FANCY INTENSE YELLOW**

Clarity Grade **VS 1**

April 23, 2026

IGI Report Number **LG794641484**

Description **LABORATORY GROWN DIAMOND**

Shape and Cutting Style **CUT CORNERED RECTANGULAR  
MODIFIED BRILLIANT**

Measurements **11.32 X 7.51 X 5.18 MM**

**GRADING RESULTS**

Carat Weight **4.11 CARATS**

Color Grade **FANCY INTENSE YELLOW**

Clarity Grade **VS 1**

**ADDITIONAL GRADING INFORMATION**

Polish **EXCELLENT**

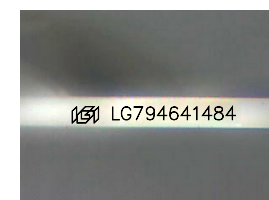
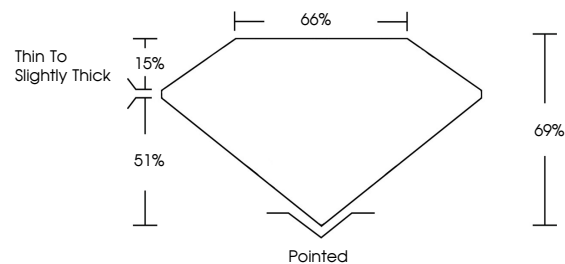
Symmetry **VERY GOOD**

Fluorescence **NONE**

Inscription(s) **IGI LG794641484**

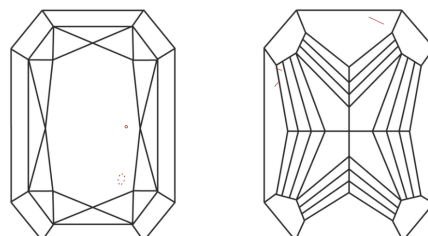
Comments: This Laboratory Grown Diamond was created by Chemical Vapor Deposition (CVD) growth process.

**PROPORTIONS**



Sample Image Used

**CLARITY CHARACTERISTICS**



**KEY TO SYMBOLS**

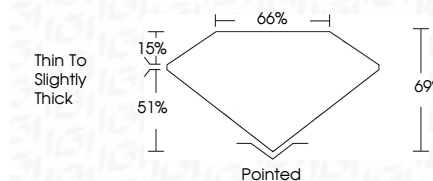
Red symbols indicate internal characteristics.  
Green symbols indicate external characteristics.

**COLOR**

D E F G H I J Faint Very Light Light

**CLARITY**

FL	IF	VS <sup>1-2</sup>	VS <sup>1-2</sup>	SI <sup>1-2</sup>	I <sup>1-3</sup>
Flawless	Internally Flawless	Very Very Slightly Included	Very Slightly Included	Slightly Included	Included



**ADDITIONAL GRADING INFORMATION**

Polish **EXCELLENT**

Symmetry **VERY GOOD**

Fluorescence **NONE**

Inscription(s) **IGI LG794641484**

Comments: This Laboratory Grown Diamond was created by Chemical Vapor Deposition (CVD) growth process.



April 23, 2026  
IGI Report No LG794641484  
CUT CORNERED RECT. MODIFIED BRILLIANT  
4.11 CARATS  
FANCY INTENSE YELLOW  
VS 1  
69%  
66%  
Thin To Slightly Thick  
Pointed  
EXCELLENT  
VERY GOOD  
NONE  
IGI LG794641484  
Comments: This Laboratory Grown Diamond was created by Chemical Vapor Deposition (CVD) growth process.