



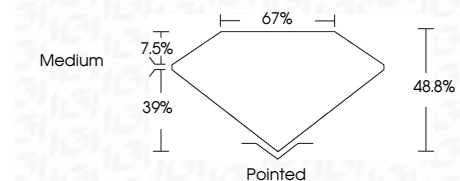
ELECTRONIC COPY

LG794641067
Report verification at igi.org



April 21, 2026
IGI Report Number **LG794641067**
Description **LABORATORY GROWN DIAMOND**
Shape and Cutting Style **TRAPEZE BRILLIANT CUT**
Measurements **8.02 X 11.72 X 5.72 MM**

GRADING RESULTS
Carat Weight **4.05 CARATS**
Color Grade **E**
Clarity Grade **VVS 2**



ADDITIONAL GRADING INFORMATION
Polish **EXCELLENT**
Symmetry **EXCELLENT**
Fluorescence **NONE**
Inscription(s) **IGI LG794641067**
Comments: This Laboratory Grown Diamond was created by Chemical Vapor Deposition (CVD) growth process. Type IIa



April 21, 2026
IGI Report No LG794641067
TRAPEZE BRILLIANT CUT
8.02 X 11.72 X 5.72 MM
4.05 CARATS
E
VVS 2
48.8%
67%
Medium
Pointed
EXCELLENT
EXCELLENT
NONE
IGI LG794641067
Comments: This Laboratory Grown Diamond was created by Chemical Vapor Deposition (CVD) growth process. Type IIa

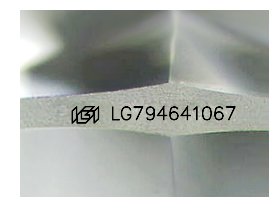
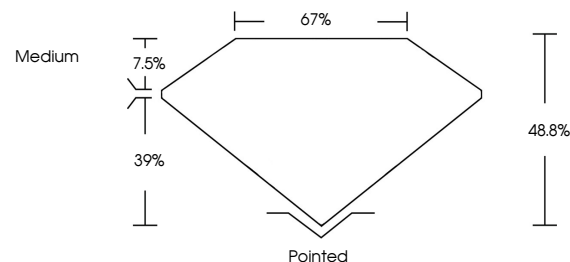
LABORATORY GROWN DIAMOND REPORT

April 21, 2026
IGI Report Number **LG794641067**
Description **LABORATORY GROWN DIAMOND**
Shape and Cutting Style **TRAPEZE BRILLIANT CUT**
Measurements **8.02 X 11.72 X 5.72 MM**

GRADING RESULTS
Carat Weight **4.05 CARATS**
Color Grade **E**
Clarity Grade **VVS 2**

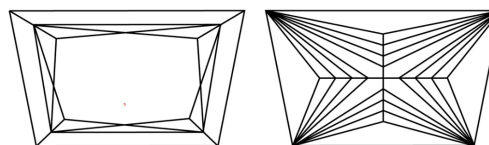
ADDITIONAL GRADING INFORMATION
Polish **EXCELLENT**
Symmetry **EXCELLENT**
Fluorescence **NONE**
Inscription(s) **IGI LG794641067**
Comments: This Laboratory Grown Diamond was created by Chemical Vapor Deposition (CVD) growth process. Type IIa

PROPORTIONS



Sample Image Used

CLARITY CHARACTERISTICS



KEY TO SYMBOLS

Red symbols indicate internal characteristics.
Green symbols indicate external characteristics.

COLOR

D E F G H I J Faint Very Light Light

CLARITY

| FL | IF | VVS ¹⁻² | VS ¹⁻² | SI ¹⁻² | I ¹⁻³ |
|----------|---------------------|-----------------------------|------------------------|-------------------|------------------|
| Flawless | Internally Flawless | Very Very Slightly Included | Very Slightly Included | Slightly Included | Included |

