



ELECTRONIC COPY

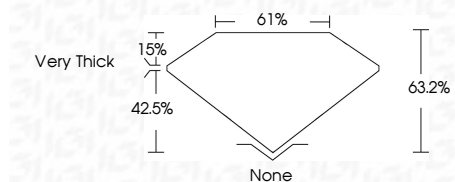
LG794641059
Report verification at igi.org



April 22, 2026
IGI Report Number **LG794641059**
Description **LABORATORY GROWN DIAMOND**
Shape and Cutting Style **MODIFIED OVAL STEP CUT**
Measurements **12.71 X 8.40 X 5.31 MM**

GRADING RESULTS

Carat Weight **4.04 CARATS**
Color Grade **F**
Clarity Grade **VVS 2**



ADDITIONAL GRADING INFORMATION

Polish **EXCELLENT**
Symmetry **EXCELLENT**
Fluorescence **NONE**
Inscription(s) **(IGI) LG794641059**
Comments: This Laboratory Grown Diamond was created by Chemical Vapor Deposition (CVD) growth process. Type IIa



April 22, 2026
IGI Report No LG794641059
MODIFIED OVAL STEP CUT
12.71 X 8.40 X 5.31 MM
4.04 CARATS
F
VVS 2
63.2%
61%
Very Thick
None
EXCELLENT
EXCELLENT
NONE
(IGI) LG794641059
Comments: This Laboratory Grown Diamond was created by Chemical Vapor Deposition (CVD) growth process. Type IIa

LABORATORY GROWN DIAMOND REPORT

April 22, 2026
IGI Report Number **LG794641059**
Description **LABORATORY GROWN DIAMOND**
Shape and Cutting Style **MODIFIED OVAL STEP CUT**
Measurements **12.71 X 8.40 X 5.31 MM**

GRADING RESULTS

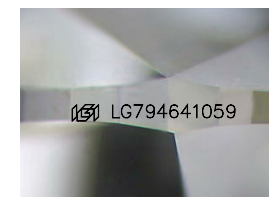
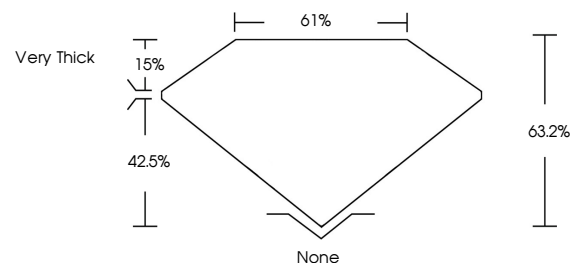
Carat Weight **4.04 CARATS**
Color Grade **F**
Clarity Grade **VVS 2**

ADDITIONAL GRADING INFORMATION

Polish **EXCELLENT**
Symmetry **EXCELLENT**
Fluorescence **NONE**
Inscription(s) **(IGI) LG794641059**

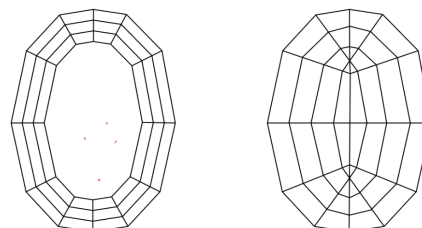
Comments: This Laboratory Grown Diamond was created by Chemical Vapor Deposition (CVD) growth process. Type IIa

PROPORTIONS



Sample Image Used

CLARITY CHARACTERISTICS



KEY TO SYMBOLS

Red symbols indicate internal characteristics.
Green symbols indicate external characteristics.

COLOR

D E F G H I J Faint Very Light Light

CLARITY

FL	IF	VVS ¹⁻²	VS ¹⁻²	SI ¹⁻²	I ¹⁻³
Flawless	Internally Flawless	Very Very Slightly Included	Very Slightly Included	Slightly Included	Included

